



MONTANA


43

Sentinel

Placement Bureau - 1943

montana's 39<sup>th</sup> year book ---



An aerial photograph of a school campus in 1943. The image shows several large, multi-story buildings, likely classrooms or administrative buildings, arranged in a grid-like pattern. There are numerous trees scattered throughout the campus, particularly around the buildings and along the roads. In the foreground, there are large, open areas that appear to be sports fields or parking lots. The background shows a residential area with houses and a hillside. The overall scene is a typical mid-20th-century school campus.

*the* 1943

published by the associated students of

An aerial photograph of the Montana State University campus, showing various academic buildings, a large stadium, and surrounding fields. A large, dark, stylized 'Sentinel' watermark is overlaid across the center of the image.

# Sentinel

Montana state university

Aline Mosby editor

# To Montana



# Men

this, the 1943 Sentinel,  
is dedicated

to you over here now,  
whose faces may be in shadow  
because you put down your books to fight  
for a better world  
and to you not yet initiated  
into this grim group  
because some of your faces, too,  
will live only in memory  
but to you who return  
some day in the bright tomorrow  
take down this book  
and once more  
be back at Montana. . .





# *meet montanans...*



## ● SCHOLARS

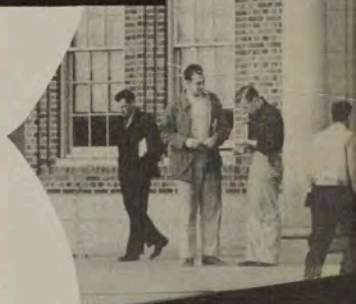
Montana students . . . the administration, the schools and their graduating seniors.

## ● THE WOMEN

Montana women . . . their activities and living groups.

## ● THE MALE ANIMAL

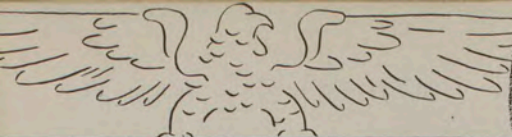
Montana men . . . their activities and living groups.







MARY



# *what they do...*

## ED-COED

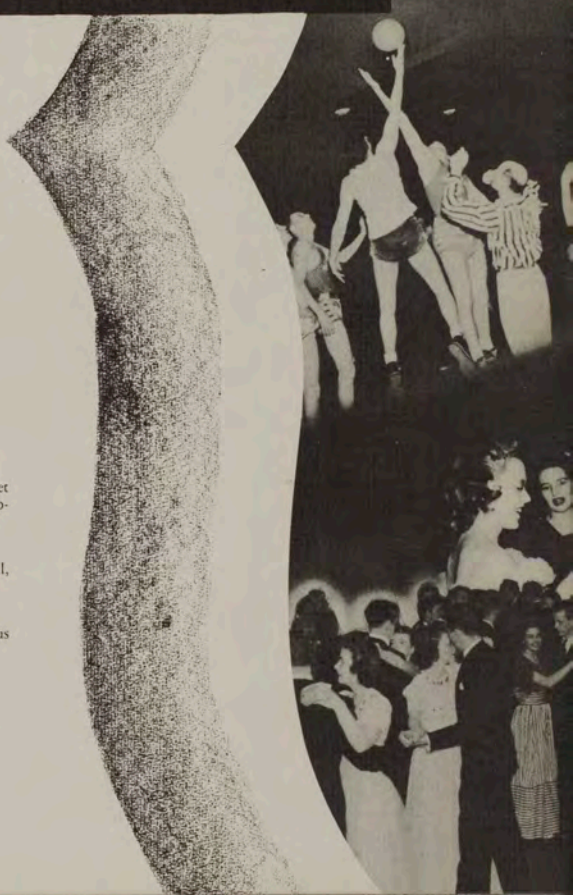
Montana men and women meet . . . student government, co-educational activities.

## CONQUEST

Montana athletics . . . football, basketball, minor sports.

## PANORAMA

Montana life . . . the campus parade, the queens.



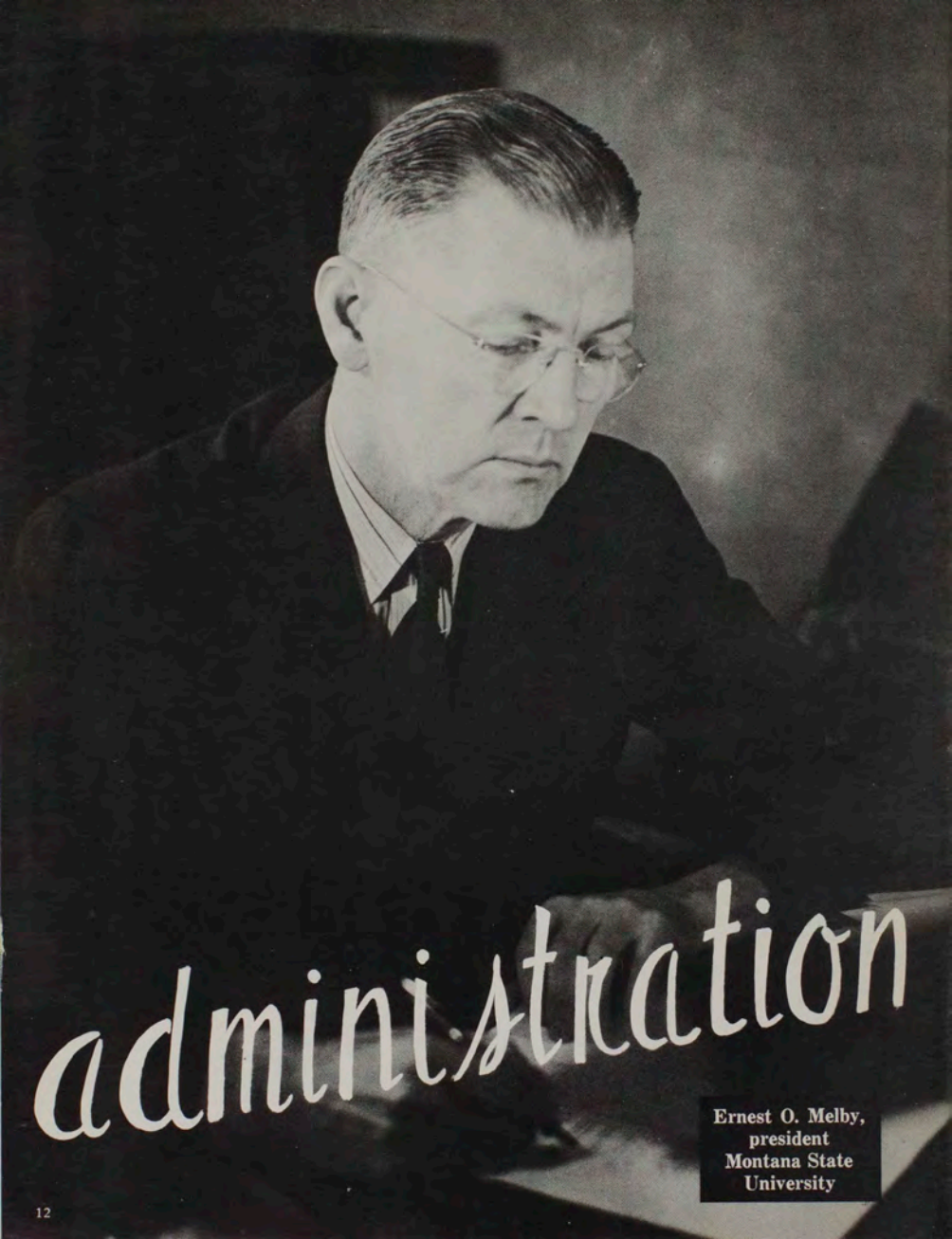


# Scholars



The lamp of wisdom goes strong fall quarter, wavers feebly winter quarter, moves outside spring quarter . . . you can wake up now, the bell just rang. . . .





# administration

Ernest O. Melby,  
president  
Montana State  
University

Administrative conference: Speer and Melby.



R. H. Jesse, dean of the faculty.



C. W. Leaphart, university vice-president.

Dr. Melby swept into his second year as president of the University with banners flying, nobly bucked the obstacles involved in running an educational institution in wartime. He inspired students to stay in school in spite of the war, handed progressive educators a thrill by giving them more co-operation than they had received in the U's history. Guided by E. O. and his able deans, the University stayed conspicuously alive, continued all of its schools, still sported more males than females in its depleted student body. The administration showed its truest colors when the army air corps detachment moved in. The efficiency displayed in arranging for their housing and training was no less than remarkable. . . .



Governor Sam Ford, president,  
state board of education.



Where the line forms.



J. B. Speer, registrar.

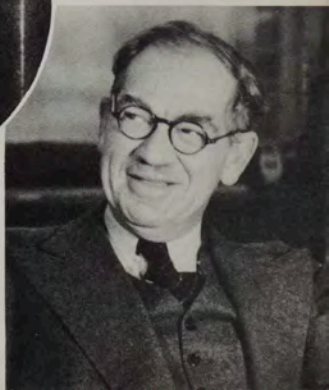


E. K. Badgley, auditor.

The financial obligations of MSU's scholars to their alma mater are handled by Mr. Badgley and the business office, while Registrar Speer and his staff have the tough task of issuing grades and keeping complete records of students and their courses of study. Deans Miller and Ferguson ably attend to the personal problems of their charges, keep tab on their activities and souls. Did a neat job of rehousing men and coeds when the incoming army made evacuation of all residence halls necessary.



Mary Elrod Ferguson, dean of women.



Burly Miller, dean of men.



# Seniors



The last mile

# Arts &



Dean R. H. Jesse



IDELLA BASSFORD



ROBERT BARNES



ARNOLD BAKKEN



ANNA BAKER



GERTRUDE AUREN



BRUCE ALLISON



MANGERY ABEL



POLLY CANFIELD



BETTY BURNS



EUGENE BUDEWITZ



VIRGINIA EMRICK



VIRGINIA BELL



BETTY BELL



PRUDENCE CLAPP



EARL CHRISTENSEN



WILLIAM CHERUL



JEAN CASTO



VICTORIA CANKULIS



MARY RITA CORBETT



LENORE COLE

# Sciences



IDA DECKER



LEONA DE COCK



MARY DEEGAN



MRS. HELEN DUFFY



RUSSELL EDWARDS



MARINE CURTIS



HENRY DAHMER



WILLIAM FITZPATRICK



HELEN FRISBEE



RAYMOND GAJAN



RICHARD GALLANT



BETTY GARMAN



JOAN FALLER



JENNIE FARNSWORTH



VIRGINIA GILLESPIE



ROBERT GREENE



MYRNA HANSEN



RAMAH GASTON



ROBERT HEXOM



BERNICE HOLLENSTEINER



JOAN HARKER



MYRTLE HARRY



CHARLOTTE KEFFELER

MRS. EVA KERSHAW

BARBARA JOHNSTON

AUDREY JOHNSON

MARGARET JOBUCKS

CARL ISAACSON

DOROTHY LARSEN

BETTY LEAPHART

MARGARET LANDRETH

LEONARD LAMBEIN

PEGGY KITT

CHARLES KING

BARBARA McCULLOUGH

JOHN McCULLY

DOROTHY LLOYD

JESSIE LEWIS

MARY LEARY

BETTY NADLER

LOUISE MORNOUT

DORIS MORLEY

MRS. PEGGY MAST

BILL LEAPHART

BETTY MACLAY

ELWOOD NELSON

LAEL OLCOTT



OWEN OLESEN



PAULA OTTE



RUBY PLUMMER



FRANCIS POTT



HELEN RAE



MARGARET REGAN



RONALD RICE



KATHERINE ROBERTSON



BILL ROBERTSON



KATHARINE RUENUVER



DEWEY SANDELL



ARTHUR SANDERSON



GEORGE SANTISTEBAN



CHESTER SCHENDEL



RITA SCHILTZ



RUTH SHOBER



RUTH SMAILS



LEONARD SMITH



MYRON STIRRATT



GORDON SWANSON



HOMER THOMPSON



BETTY ULRIGG



LORRINE WAISANEN



MARGERY WALKER



JAMES WALSH



CHRISTINE WARREN



JO WEBB



ORPHA WEISBECK



ELDON WHITESITT



VIRGINIA WILHELM



ROBERTA WATSON



PATRICIA WOOD



HELEN YURMAN



BOB ZAHN



PAUL ZUELKE



BARBARA WILKINSON

school of

# Education



Dean Walter Anderson



MARION EMERSON



IRMA LU HEATON



LOIS METZGER



KATHERINE NICHOLS



JOSEPH TAYLOR

school of

# Forestry



Dean T. C. Spaulding



FRANK BAILEY



HAROLD DUKE



JORGEN EGELAND



ANTHONY EVANKO



CLIF GIFFEN



WILLIAM HODGE



WILLIAM MackENZIE



OLIVER MAKI



MILTON MILLARD



FRANK NELSON



EVERETT SANDERSON



RONALD SCHULZ



JOHN VENRICK



PHILIP YOVELICH

school of *Business*



Dean Robert C. Line



CARVER ANDERSON



CHARLES BARNWELL



WILMER BAUER



GLEN COX



JOHN EIDEL



EUGENE CLAWSON



KATHERINE CLARK



MICHAEL BESICH



MARGUERITE BELZER



WALDEN JENSEN



HARRY HESSER



LESTER HANSEN



JOE GANS



BOB EMRICK



ANN LAWTON



CAROL LINEBARGER



SIDNEY KURTH



# Administration



COLIN MacLEOD



CHARLES RIGG



PETER RIGG



MARJORIE SAVAGE



ELVIOR SCHMIDT



SHIRLEY SCHNEE



RUTH SIMPSON



DORAN STOLTENBERG



JOHN SUGRUE



LESLIE TAYLOR



JACK TURNER



GRETCHEN VAN CLEVE



WAYNE WENDY



JEAN WIEGENSTEIN



PHYLLIS WILCOX



RAY WISE

school of

# Journalism



Dean James L. C. Ford



RAY FENTON



ARRETTA DOBROVOLNY



IERE COFFEY



PAT CAMPBELL



MARY BUKVICH



LUCILLE ADAMSON



EVERETT MORRIS



EVELYN MAYER



CLARE MacNEILL



HARLAN LEE



CLARY KAUFMAN



ALINE MOSBY



VERN REYNOLDS



DOROTHY ROCHON



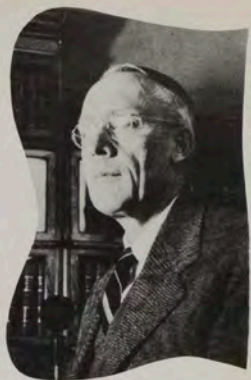
JEAN SWENSON



LUCILLE WILLIAMS

school of

# Law



Dean C. W. Leapart



ROBERT BROOKE



JOSEPH HENNESSY



CLAYTON HERRON



THEODORE JAMES



ROBERT KITT



ALLEN MCKENZIE



JOHN MCKINNON



ROBERT MILNE



DONALD RONISH



WILLIAM SCOTT



JOHN SHEEHY



school of

# Music



Dean John Crowder



GWENDOLYN ANDERSON



DOROTHY BORCHERING



MAE BRUCE



LOIS DAHL



RALPH GILDROY



JUDITH HURLEY



BRINTON JACKSON



WILLIAM LYNN



ANNABELLE PETERSON



GAIL ROUNCE



ELWOOD THOMPSON

school of

# Pharmacy



Dean C. E. Mollett



ARTHUR BEATTIE



ROBERT DEBOER



CALVIN HUBBARD



NEIL JOHNSON



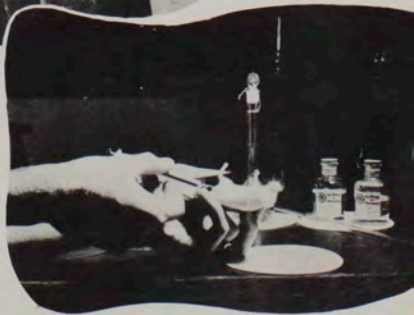
WILLIAM JONES



DAN McDONALD



ALBERT PICCIONI



# The Seniors

... consist of philosophical draft-dodging males, aging career-bound females. Now the four-year plan is completed; the old guard resigneth and maketh way for the new. And so the big-shots take a powder, mull over their accomplishments—Mortar Board, Silent Sentinel, the power in the high places . . . Theirs is no story-book graduation, but one into the arms of the draft board or a war plant. It's all over now. . . .



Bob Ness, president



Dorothy Borchering, treasurer



Bernice Hollensteiner, secretary



Ann Clements, vice-president

# The Juniors

... having reached this stage are veterans by right. Have one eye on the beckoning bigtime honoraries; therefore appear suave, worldly, activity mad. Now that the third year has safely passed, the junior political influentials and lesser celebrities have their feet in the door of fame; the rest are content to settle down and be just juniors. . . .



Marjorie Templeton, President



Eileen Murphy, treasurer



Bob Oswald, vice-president



Marjorie Harrison, secretary

# The Sophomores

... as a class usually consist of Spurs, Bearpaws, budding big shots. Have some idea they run the campus; make much noise illustrating same. Their best contribution of the year was the war stamp drive, backed by sophomore organizations. Names and faces, pushing above the mob; good kids nonetheless. Time and experience will tell. . . .



Dick Bowman, President



Eileen Plumb, treasurer



Dorothy Ficke, secretary

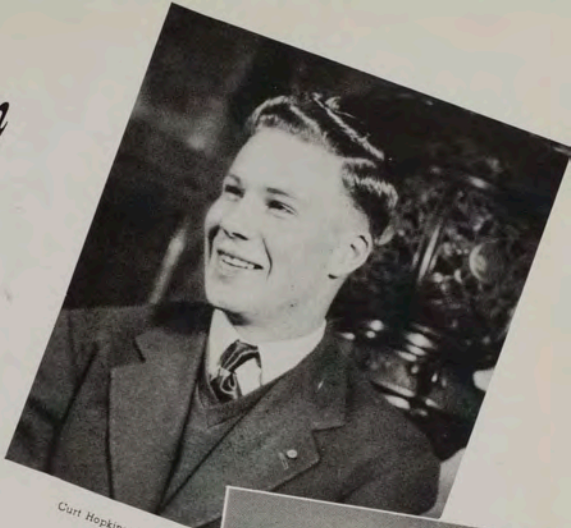


Jeannette Bakke, vice-president



# The Freshmen

... roared into the Garden City last September to make their debut at MSU. Many still roaring; others settled down to the wiser aspects of academic life. The gang met last fall to elect officers, after which they were never seen en masse again. The kids painted the M, learned the Greek alphabet, neglected to ring traditional victory bell during basketball season. Had a good time anyway. . . .



Curt Hopkins, president



Inez Sue Fraser, secretary



Dick Burgess, vice-president



Jane Jellers, treasurer

Ed-Coed



Meet the right people, buy the right cokes . . . on to the honoraries . . . we want you to be one of us . . . for a slight charge. . . .







*scotty*

*A.S.M.S.U.*

Scotty MacLeod,  
student body  
president

# The Big Four



Nadler, vice-president

betty



Bukvich, secretary

mary



Hesser, business manager

harry

. . . Hesser, Bukvich, MacLeod, Nadler, who hold MSU's top offices and direct the staggering machinery of its student government. Top boss is quiet, likeable Scotty MacLeod, who rode into the presidency on the crest of a hard-fought student election. Climaxing three years of service to MSU, Scotty took over this year the hard job of keeping organizations and students in tune with war needs. Grizzly Queen Betty Nadler of the charming smile acted as official hostess of the U as vice-president. Activity Girl Mary Bukvich, another charmer, kept Central Board minutes as secretary. Business manager Harry Hesser of basketball fame watched over student funds. The Big Four did their duties well. No remuneration but much glory. . . .



#### CENTRAL BOARD

*Seated, left to right:* Hesser, Bukvich, MacLeod, Nadler.  
*Standing:* Briggs, Wedin, Wise, Rochon, Sandell, Fenton, Delaney, Badgley.



Scotty MacLeod, chairman

# ASMSU

April showers bring campaign cigars, not May flowers, at MSU. Maneuvers, deals and intrigues flourish as various factions fight for feet in the political door during spring elections. Worth shooting for is a seat on Central Board, main governing body which forms the nucleus of student activities. The Board meets once a week to heckle a round of candy bars from some obliging member or okay a myriad of budgets under the cracking whip of faculty members Briggs and Badgley. Other duties include mulling over reports and decisions of ASMSU committees.



Skell Sheehy, chairman



#### TRADITIONS BOARD

*Seated, left to right:* Ruenuaver, MacIntosh, Sheehy, Asher, Warden.  
*Standing:* Delaney, Hesser, McKenzie, Gans.

### HOMECOMING COMMITTEE

*Seated, left to right:* Murphy, Webb, Hollensteiner, Deegan.

*Standing:* Delaney, Bradeen, Evanko, Johnson.



## Committees

Why committees? Because ASMSU is an intricate organization whose officials rarely have time to attend to the countless administrative problems. Hand-picked by President MacLeod, ASMSU committees regulate the student extra-curricular life, major decisions being passed down the line to Central Board.

Important duties are organizing rallies, regulating publications, providing for student entertainment, keeping the university before the public. Committees come to life once or twice to perform these duties, then grow feeble and peter out for another year.



Mary Jane Deegan, chairman



Mike O'Connell, chairman



### CONVOCATIONS COMMITTEE

*Left to right:* James, Adamson, O'Connell, Scott.



SOCIAL COMMITTEE

*Left to right: Sweeney, Shirley, Nadler, Harrison, Donovan.*



Betty Nadler, chairman

*More committees*

ACTIVITY COMMITTEE

*Left to right: Hodges, Hubbard, Hansen, Myklebust.*



Bernice Hansen, co-chairman



PUBLICATIONS BOARD

*Seated, left to right: Morris, Badgley.  
Standing: Thraikill, Swenson, Fen-  
ton, Mosby.*



Evie Morris, chairman







Judy Hurley, chairman



OUTSIDE ENTERTAINMENT COMMITTEE

Left to right: Bennett, Murphy, Hurley, Gildroy.



STUDENT UNION EXECUTIVE COMMITTEE

Seated, left to right: Briggs, DeCock, Van Duser, Kurth.  
Standing: Rigg, Pedersen.



Sid Kurth, chairman

PUBLIC RELATIONS COMMITTEE

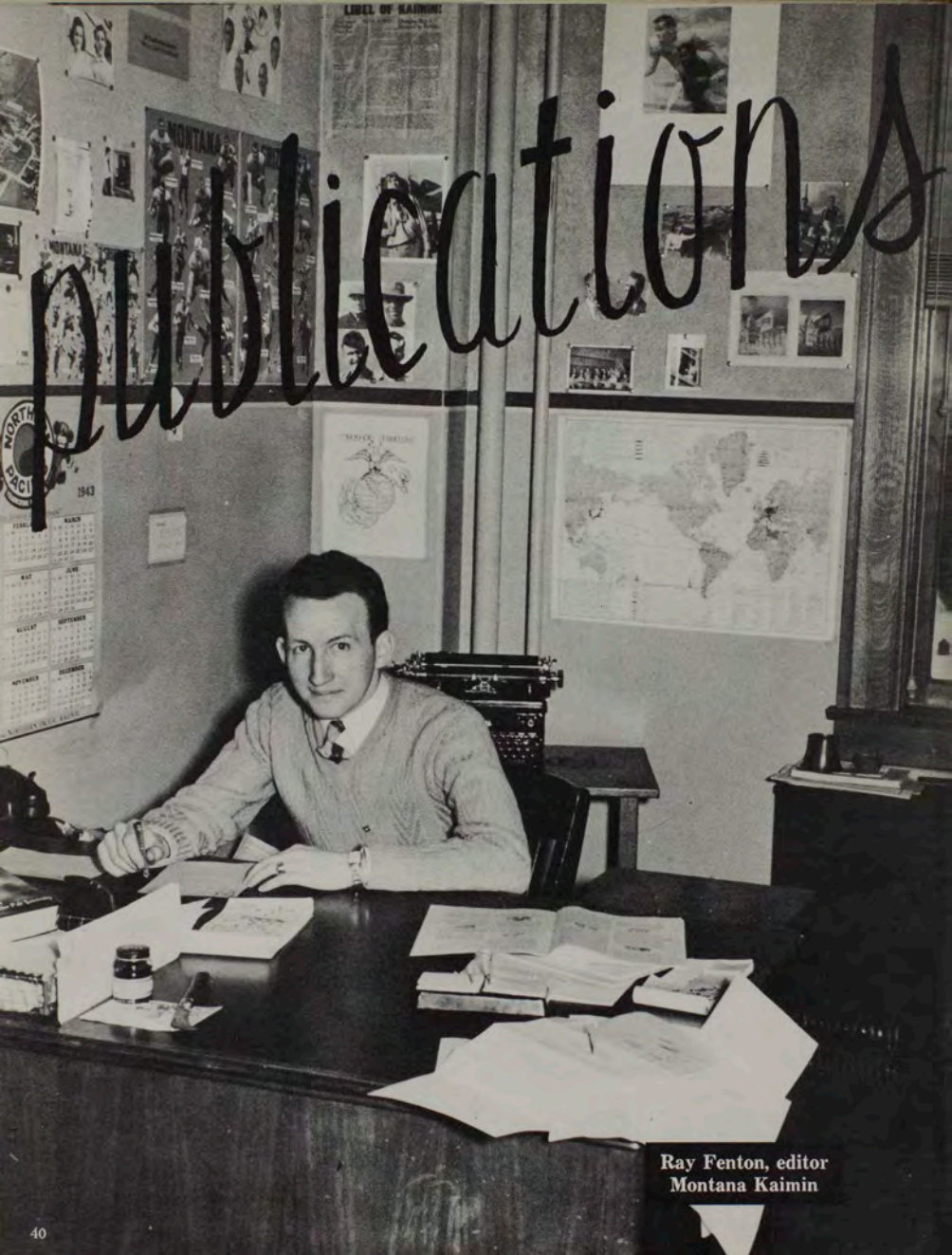
Left to right: Burgess, Voldseth, Marshall, Thompson, Landreth.



Ed Voldseth and Jack Burgess, co-chairmen



# publications



Ray Fenton, editor  
Montana Kaimin

# The Montana Kaimin

... under Dean Ford's regime was thrown wide open to the student body. No longer a tool of the J School, low on staff members, cut to a twice weekly appearance, financially embarrassed, it carried on surprisingly well. Most notable factors in this year's issues were Editor Fenton's versatile tabloid makeups, some amazingly capable feature writing. Sophomore Peg Thraikill, a mere woman, grew gray under the strain of trying to make the sheet pay its way. Jere Coffey and Mary Bukvich slaved, proved their salt...



Jere Coffey,  
associate editor



Mary Bukvich,  
associate editor



Pat Campbell,  
sports editor



Peg Thraikill,  
business manager



Merritt, circulation



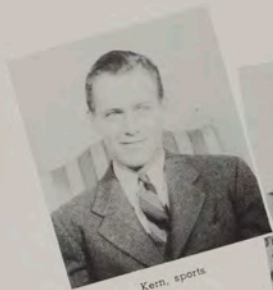
Rochon, news



Swenson, editorial



Morris, editorial



Ken, sports



Williams, copy



Reynolds, sports

# Kaimin Staff

To pick out those journalists who dished out the most news is difficult, so herewith are displayed names and faces of ye Kaimin mast-head (page 2, col. 1). Some sweated printer's ink to keep the paper on its feet; others just provided cigarettes and local color to the news office. Anyway, give the crew a hand. . . .



Eastman, photography  
Rivin, photography  
Griffith, exchange  
Mayer, editorial



Lee, features  
Kaufman, society  
Adamson, copy  
Mosby, editorial

# The Mountaineer



Gertrude Auren Dixon,  
editor



Loel Olcott,  
circulation manager



Virginia Perkins,  
production manager

Bob Wylder,  
business manager

... blossomed forth from the ashes of last year's financially disastrous *Sluice Box*. Bigger and better than its predecessor, although still mimeographed, it presented an excellent, at times brilliant, array of stories, articles and poems. A subscription drive plus support from the faculty brought the mag security and success. In quality of material it might well be compared to the late, famed *Frontier and Midland*.

# 1943



Aline Mosby, editor

On the second floor of the Student Union building is a small office. It has a linoleum floor, buff walls, a long table, a desk, a typewriter, a wastebasket, an ash tray—and a girl with red hair. It is she who created, such as it is, this book. Hers was not an easy task. This year's budget was cut in half. The staff was reduced to a tiny handful of upperclassmen plus a galaxy of freshmen who did little but clutter up the place. In spite of all this the courageous redhead, the third woman editor in Sentinel history, came through rather nobly. She lost weight and grade points in the process. But without the aid of the faithful few who stuck by her she would probably be quite dead by now. Among these was journalist Bob Sias, who wrote most of the copy and kept her supplied with cigarettes and morphine tablets during her darkest hours.



Gloria Bugli



Evie Morris

Then there was Gloria Bugli who managed the office and supervised the freshman crew, and Evie Morris who spent innumerable hours taking pictures. Above all there was lovely Helen Walterskirchen, to whose talent the book owes all of its art work. And, pictured herewith, many more. . . .



Helen Walterskirchen

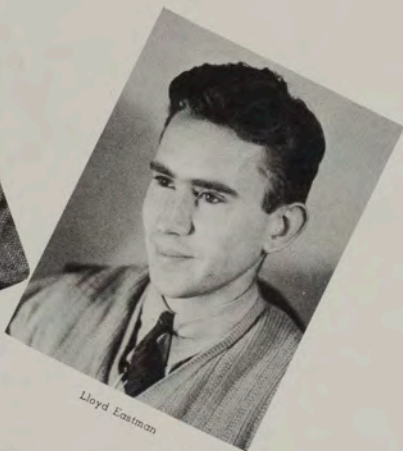
# Sentinel



Ed Dolan



Bob Sias



Lloyd Eastman

McKee  
Smartt

Ashton  
Grigsby

Wylder  
Griffith

Angstman  
Voldseth

Froch  
Wirth





Johnson  
Swanson

Oleson  
Mannix

Lyall

# Sentinel Staff

Regan  
Stramahan  
Kreidel  
Brackman



Perry  
Gibson  
O'Connell  
Atwood





# Business Staff

... tottered for a brief moment when Uncle Sam beckoned Manager Herron, staged a spirited revival soon after Rasmussen took the reins. Rass's ad-chasing crew, composed largely of attractive gals, proved efficient, hard working, got results. . .



Clayton Herron



Neal Rasmussen

Luben  
Davis

Grasseschi  
Fraser

Wright  
McConnell

Sackett  
Halter

Buntin  
Halter





Julius Wuerthner as Der Fuhrer between scenes of "Confidentially, Mr. Hitler"

# Drama

... continued on the campus in spite of the war. The productions, well chosen, well directed, introduced many new faces to MSU audiences, brought back many familiar ones. Pop Haydon shattered tradition by doing a benefit musical for his autumn quarter offering. The show, a loud, corny hodgepodge of khaki and scantily-clad femininity, bore the clever title, *Confidentially, Mr. Hitler*. . . .



Larrae Haydon, director



Bob Ackerlund, electrician



Mike O'Connell, technician



A smattering of *Confidentially, Mr. Hitler's* male chorus, and Tiger.

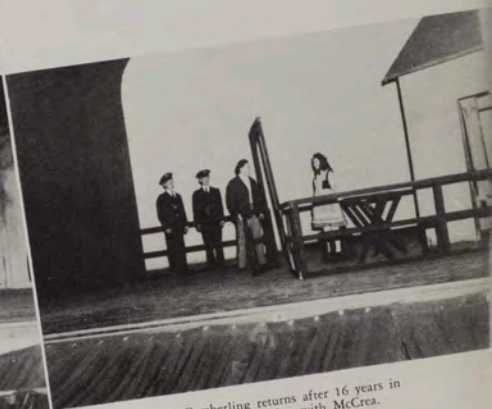
# Molnar's "Liliom"

... was whipped off the required reading shelf by Pop Haydon and brought to life on the Student Union Theatre's stage. A beautiful and moving legend filled with Freudian impressions, it proved too deep for most of its campus audience, received a chilly shoulder from same. It came into its own, however, at a special matinee before an enthusiastic mass of aviation students who cheered it wildly, demanded curtain call after curtain call.



Gemberling gets tough with Janie Mee; Sias slinks menacingly in the background.

Gemberling, a dead pigeon, is mourned by none but McCrea

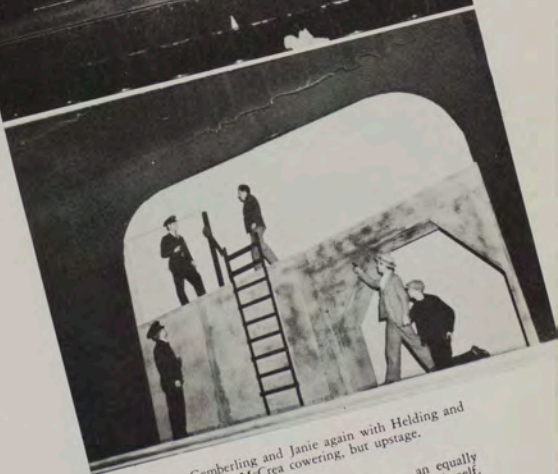
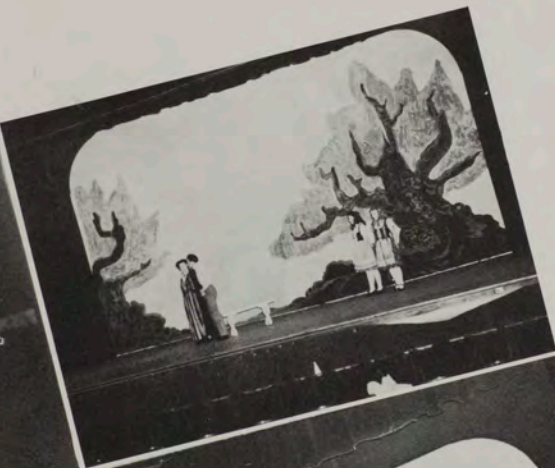


Gemberling returns after 16 years in heaven to chat with McCrea.

# Masquer Winter Production



Gemberling dies peacefully in the lovely McCrea arms.



Gemberling and Janie again with Helling and McCrea cowering, but upstage.

A defeated Sias on his knees . . . an equally defeated Gemberling about to stab himself.

Ed Gemberling, playing his first campus lead, blustered and shouted his way through the title role rather convincingly. Ellen McCrea handled herself capably as his bedraggled, much-beaten wife. Ana Helling, the perennial ingenue, fluttered coyly about the stage in the role of Marie, and Janie Mee sexed things up considerably as the sin-ridden Mrs. Muskat. Veteran Bob (I wanta be an actor and make love) Sias scored another personal triumph as the play's nasty antagonist. Mike O'Connell's settings, his first, were excellent.



John Lester  
chorus



A. H. Weisberg  
orchestra



Clarence Bell  
band

# Music

## Band



Keeps alive the flames of school spirit at athletic events,  
traditional gatherings, military displays.

# Orchestra



The intellectual side . . . fine music well played . . . frequent appearances on the Student Union theatre's great stage.

# Chorus



Folksongs, ballads, Brahms' Requiem, The Messiah . . . numerous distinguished concert bows on and off campus.



Ralph Y. McGinnis,  
debate coach

# Debate

Baldwin



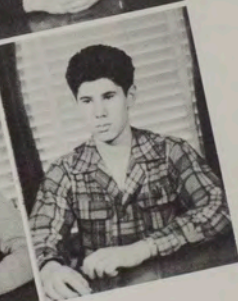
Replegle  
Isaacson



Niemi  
McDonough



Wilcox  
Cummings



... did not spread its wings this year as of yore due to wartime conditions. Local speechmakers, with the exception of Prizewinner Helen McDonald who dashed to San Francisco, stayed within Montana boundaries, presented high school assemblies hither and yon, entered numerous tournaments, did much broadcasting, were quite impressive.





Kennett, Niemi, Sias, Isaacson, and a heated session in Studio A.

## *Campus Congress*

... provided a dismal half hour each week of informal discussion via KGVO. Sponsored by Dr. Tascher's social work lab and directed by Barrister Walt Niemi, it brought most of MSU's would-be master minds before an unexcited radio public to hash over everything from student marriages to the social life of a Chinese coolie under the strain of war. Notably furthered the campaign for a stronger student voice. Listeners, however, preferred Jack Benny. . . .

Y CLUB . . . PHARMACY CLUB . . . PH.



#### PHARMACY CLUB

*First Row, left to right:* La Rue, Stricklin, Youngstrom, Nelson, Schneider, Rasmussen.

*Second Row:* Gossman, Wass, Hubbard, Corbin, Galbraith, McConnell, Handel.

*Third Row:* Jones, DeBoer, Kopet, Johnson, Suchy, Picchioni, Barsness, Huxsol, Beattie.

*Fourth Row:* Willis, Filicetti, Lawler, Hammerness, Fowler, Mollett.

## Clubs and

#### KAPPA PSI

National Pharmaceutical Honorary

*Seated, left to right:* Beattie, Johnson, Mollett, DeBoer, Picchioni.

*Standing:* Jones, Fowler, Filicetti, Suchy, Lawler, Rasmussen.

## Honorarys



KAPPA PSI . . . KAPPA PSI . . . KAPPA PSI



KAPPA TAU . . . KAPPA TAU . . . KA

### KAPPA TAU

local scholarship honorary

*Front Row, l. to r.:* Warren, Johnson, Rochon, Mosby, Williams, Bukvich, Dahl.

*Second Row:* Smith, Picchioni, Potts, Egeland, Coffey.

*Third Row:* Zahn, Clark, Isaacson, Leaphart.

### KAPPA EPSILON

national pharmaceutical honorary for women

*Seated, l. to r.:* Wass, Willis, Hubbard.

*Standing:* Nelson, Corbin, Rasmussen, Gosman.

KAPPA EPSILON . . . KAPPA EPSILON



# Managers' Club



Kurth, president

Campbell, secretary-treasurer



MANAGERS CLUB . . . MANAGERS CLUB . . . MANAGERS CLUB



Front Row, left to right: Haines, Gianoulas, Greaves, Balsam, Campbell.

Middle Row: Motin, Mlynek, McClintock, Scheeler, Tawney, Greene.

Back Row: Johnston, Simons, Anderson.



Greene, vice-president

# M Club



Seated, left to right: Bowman, Ferris, Berger, Scott,  
Thiebes, Fox, B. Leaphart,  
Standing: Kampfe, Dahmer, Hill, D. Leaphart, Reyn-  
olds, MacIntosh, Burgess.



B. Leaphart, president  
Fiske, vice-president  
Burgess, secretary

B . . . M CLUB . . . M CLUB . . . M CLUB . . . M CLUB . . . M CLUB . . . M CLUB . . .

# Sigma Delta Chi

SIGMA DELTA CHI . . . SIGMA DELTA CHI . . . SIGMA DELTA CHI . . . SIGMA DELTA CHI . . .



Coffey, president



Lee, vice-president



*Seated, left to right:* Coffey, Campbell, Fenton, Kern, Eastman, Delaney, Buzzetti.

*Standing:* Lee, Murray, Sias, Morris, Dolan, Risken.



Fenton, secretary-treasurer

# Tau Kappa Alpha



Forensic Honorary

Seated, left to right: Cummings, Replogle, Isaacson,  
Rochon, Baldwin.  
Standing: Niemi, McGinnis, McDonough.

Isaacson, president  
Rochon, secretary-treasurer



TAU KAPPA ALPHA . . . TAU KAPPA ALPHA . . . TAU KAPPA ALPHA . . .

THETA SIGMA



PHI . . . THETA SIGMA PHI . . .

### THETA SIGMA PHI

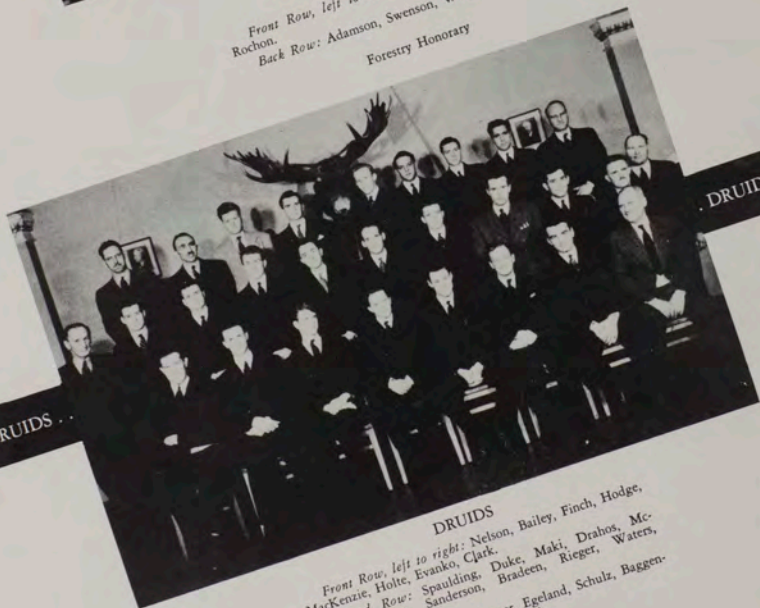
Women's National Journalism Honorary

Front Row, left to right: Clements, Mosby, Replogle, Rochon.

Back Row: Adamson, Swenson, Williams, Bukwich.

Forestry Honorary

DRUIDS . . . DRUIDS . . .



DRUIDS . . . DRUIDS . . .

### DRUIDS

Front Row, left to right: Nelson, Bailey, Finch, Hodge, MacKenzie, Holte, Evanko, Clark.

Second Row: Spaulding, Duke, Maki, Drahos, McElfresh, Giffen, Sanderson, Bradeen, Rieger, Waters, Muhlick.

Third Row: Diettert, Kramer, Egeland, Schulz, Baggenstoss, Millard, Moc, Davidson, Morris.



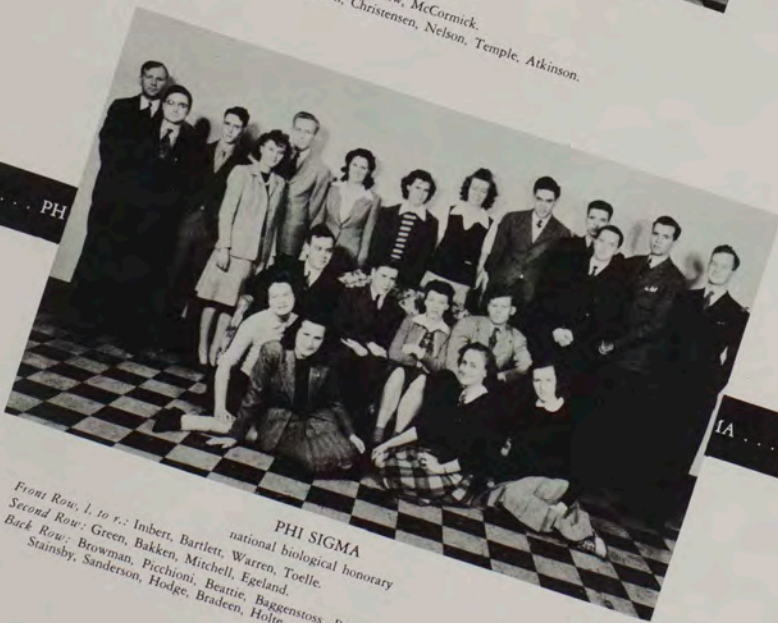
PSI CHI . . . PSI CHI . . . PSI



PSI CHI . . .

**PSI CHI**  
national psychology honorary  
*Front Row, l. to r.:* Roholt, Geis, Warden.  
*Second Row:* Rae, Linebarger, Kershaw, McCormick.  
*Back Row:* Hopkins, Peterson, Christensen, Nelson, Temple, Atkinson.

PHI SIGMA . . . PH



PHI SIGMA . . .

**PHI SIGMA**  
national biological honorary  
*Front Row, l. to r.:* Imbert, Bartlett, Warren, Toelle.  
*Second Row:* Green, Bakken, Mitchell, Egeland.  
*Back Row:* Browman, Picchioni, Beattie, Baggenstoss, Baggenstoss, Wilhelm, Farnsworth, Wood, Stainby, Sanderson, Hodge, Braden, Holte.

MASQUERS . . . MASQUERS . . . MASQUERS . . . MASQUERS . . . MASQUERS . . .



Isaacson, president  
Ackerlund, vice-president

# Masquers



*Seated, left to right:* Perkins, Williams, Holding, Rake-  
man, Hurley, Casto, Swenson.

*Standing:* Browman, Ackerlund, Sanderson, Sias, Rivin,  
Isaacson, Thompson, Spriggs, Wylder, Castle.



Perkins, secretary  
Rivin, business manager



# Newman Club



*First Row, left to right:* Sugrue, Leary, Father Plummer,  
 Zahn.  
*Second Row:* Bodin, Sullivan, Conway, V. Doyle.  
*Third Row:* Budewitz, Hughes, DiRe, Sugrue, Schiltz,  
 Clapp, Regan, Decker.  
*Fourth Row:* Pease, Gajan, Tremper, Imbert, Langen-  
 dorf, M. Doyle.

Zahn, president  
 Elder, secretary



NEWMAN CLUB . . . NEWMAN CLUB . . . NEWMAN CLUB . . . NEWMAN CI

. NEWMAN

# Forestry Club



FORESTRY CLUB

CLUB

Finch, president  
Bailey, vice-president  
Hodge, secretary

Front Row, left to right: Hodge, Lepley, Giffen, Schulz, Evanko, Holte, MacKenzie.

Second Row: Finch, Greene, Drahos, Moe, Sanderson, Bradeen, Bakken.

Back Row: Millard, Bailey, Maki, Duke, Egeland, Baggenstoss.



Holte, treasurer



Seated, left to right: E. Athern, Burrell, Dugan, Appel.  
Standing: Kramer, Cook, Morgan, Schwab, M. Athern, Frame.



Seated, left to right: Asher, Rhoads, Rieger, Bloom.  
Standing: Wolf, McElfresh, Rogers, Davidson.

# Music Club



Front Row, left to right: Lampi, Calnan, Pomeroy,  
 Buchholz, Dahl, Enevoldsen.  
 Second Row: Sanders, Anderson, Peterson, Hunt,  
 Back Row: Wright, Halter, Johnson, Granmo, Livdahl,  
 Scifers, Thompson.

Buchholz, president  
 Enevoldsen, treasurer  
 Bruce, secretary



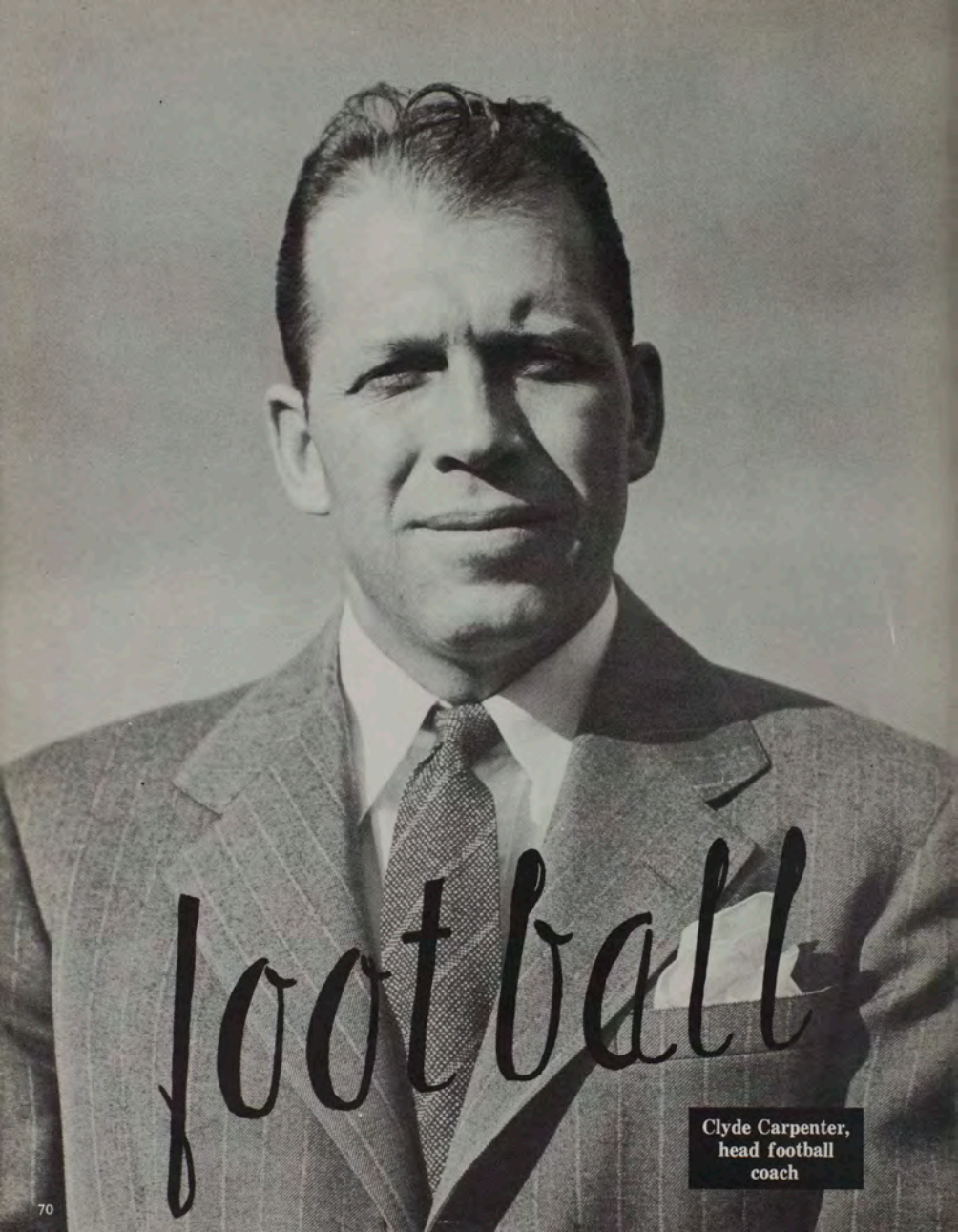
MUSIC CLUB . . . MUSIC CLUB . . . MUSIC CLUB . . . MUSIC . . . MUSIC CLUB

# Conquest



The exaltation of bloody battle, the cheers as our draft-dodging teams stagger to victory . . . you won't know the players without a program . . . oh yeah, . . .



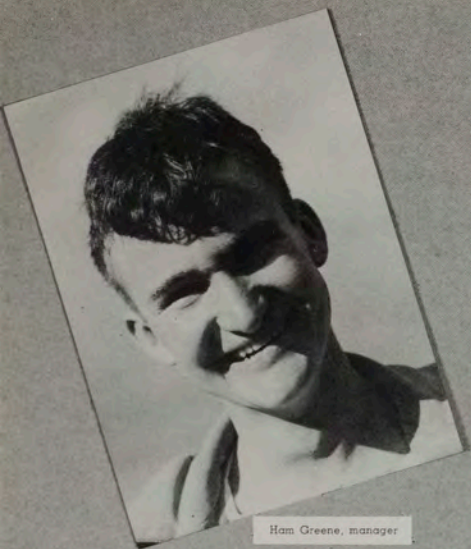


# football

Clyde Carpenter,  
head football  
coach



# Montana



Ham Greene, manager

... chose a most inopportune moment for its entrance into the Pacific Coast Conference as a full-fledged member. Faced with the toughest schedule a Montana team has had in decades, and an acute shortage of manpower... a time-honored Grizzly failing... the Montanans failed to break into the win column.

Several reasons for this dearth of Grizzly victories can be advanced. First, Montana State College did not grace the Grizzly schedule. In addition, the Grizzlies, in the year of our Lord 1942, had no less than three (3) head coaches, which is some kind of a Chinese record. Further, war conditions made impossible any monetary compensations to players by the Athletic Board. The men who composed the Montana team played because they loved the game.

We can be content to say this was not the Bruins' year. The players lacked size, experience, everything—perhaps—except heart.

Coaches Swarthout, Dahlberg, Carpenter, Adams



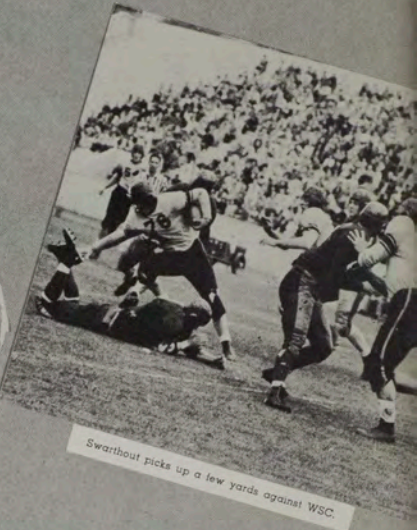
U INVADED GRIZZLY DEN..SCORE:12-6...MATHER FIELD GAVE GRIZZLIES 2nd CHASTISING..



BILL LEAPHART



DICK BOWMAN



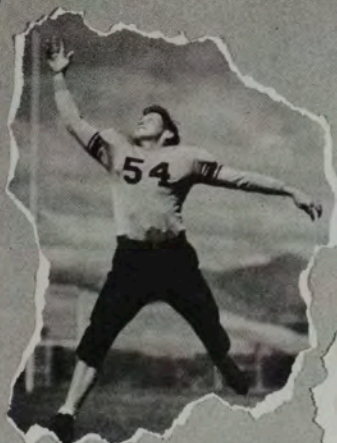
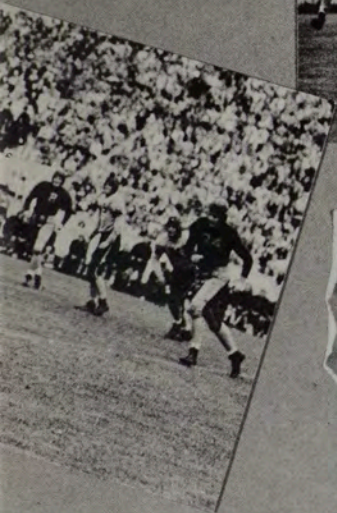
Swarthout picks up a few yards against WSC.



Bowman looks for a receiver.



Kennedy of WSC cuts back. H. Scott sets for the tackle.



PAUL BURKE

DUTCH DAHMER



JACK FERRIS





BARNEY BERGER



HAROLD SCOTT



JOE THIEBES

A. Scott pivots behind Berger's block.

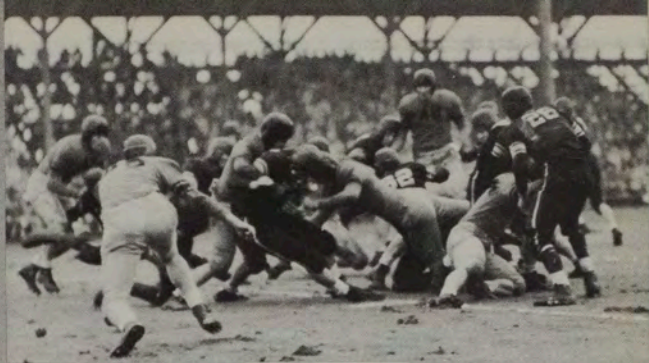


BILL ROBERTSON





KARL FISKE



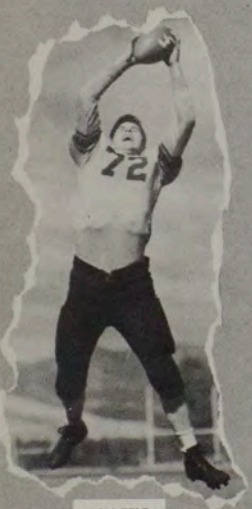
Bowman stowed under.



BILL SWARTHOUT



VERN REYNOLDS



TOM FELT



BILL MISIC

BEAVERS GNAWED THEIR WAY TO SCORE 33-0...BITTER GRIZZLIES PLAYED 30 MINUTES OF

# Up With



Who keeps 'em yelling: Yell kings Ted Delaney, Aaron Smith and Chippo Golder giving a little support to Jeannette Bakke, yell queen.

# Montana



Alice Williams



Barbara Bishop



Cora Mae Cuthbert



Judy Markel



Betty Rokeman



Bette Lorenz, head twirler



Dorothy Rochon, drum majorette



DICK KERN



DON LEAPHART



BUTCH NYQUIST



Porter of USC plows through with convoy.



KIRK BADGLEY



KENNY DRAHOS

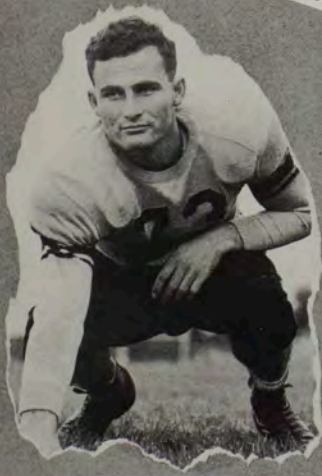




Parsons of USC goes for six.



DON FOX



LEONARD VANNET



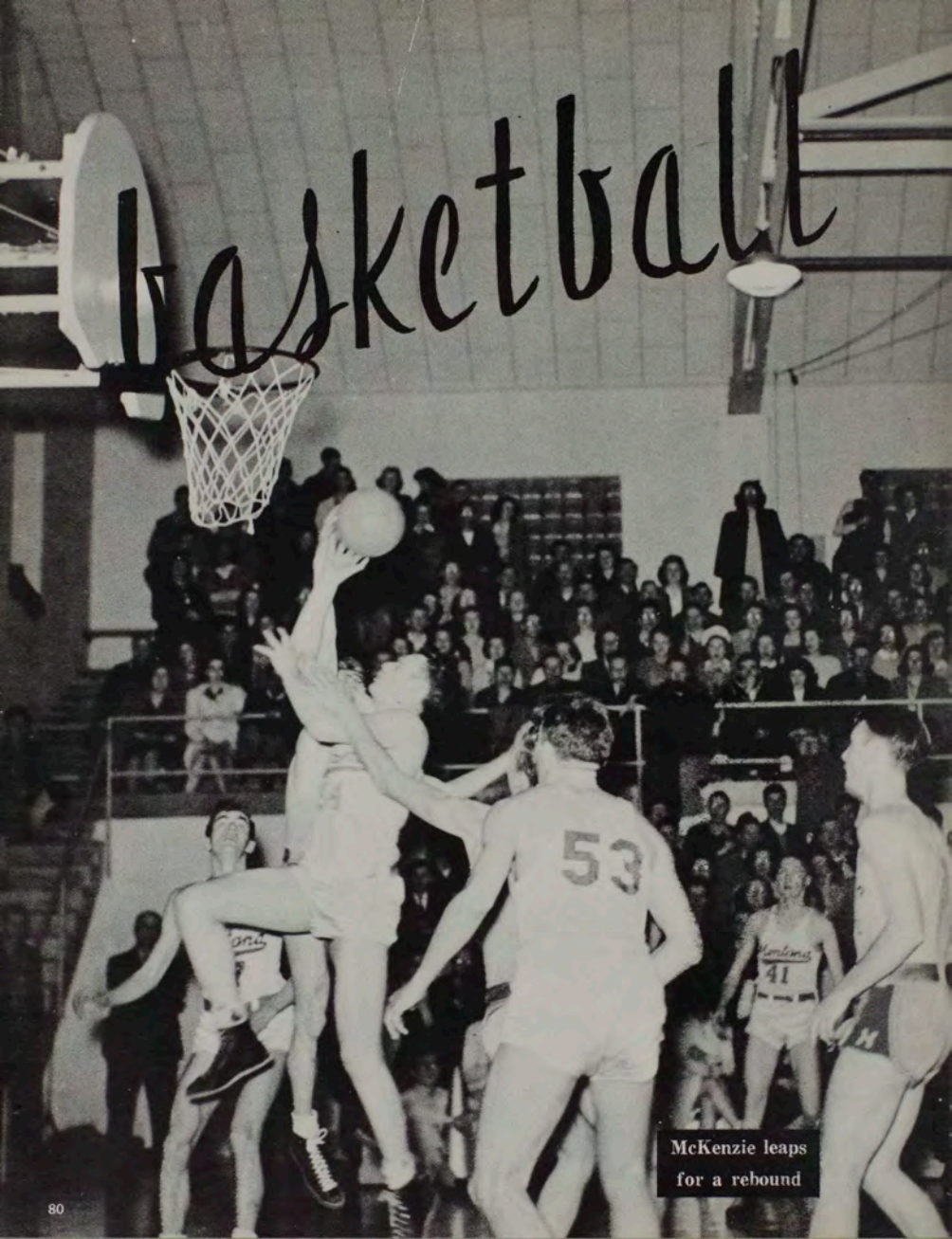
ARNOLD SCOTT



CARL SCHILLER

SCORE:13-0...SOUTHERN CAL CLOSED IN FOR FINAL KILL..SCORE:38-0...THAT IS ALL..

# Basketball



McKenzie leaps  
for a rebound



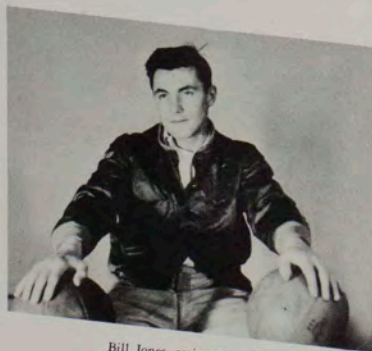
Ed Chinske, head coach.

# '42 - '43

## Season

After a disastrous football season and with few veteran hoopsters returning, basketball prospects looked none too bright. But as the season progressed the fans fairly glowed with delight. A team branded as mediocre succeeded in winning fifteen games, lost nine—but to the toughest of competition. Captain Chuck Burgess proved himself the team's most dazzling sharpshooter by hooping 359 points to surpass Degroot's old season record by 78 points.

The season saw the fourth in this year's passing parade of coaches, Clyde Carpenter, taken by the armed forces. Carpenter was replaced by Missoula High School's Eddie Chinske who mentored both squads, gained nation-wide notice when a syndicated sportswriter cracked: "He's the only college coach who has his own farm team."



Bill Jones, assistant coach.



Bob Balsam, manager.



1943

Dick Bowman  
Chuck Burgess (captain)  
Jack Burgess  
Bob Cramer  
Harry Hesser  
Bill Jones, assistant coach



SQUAD

Allen McKenzie

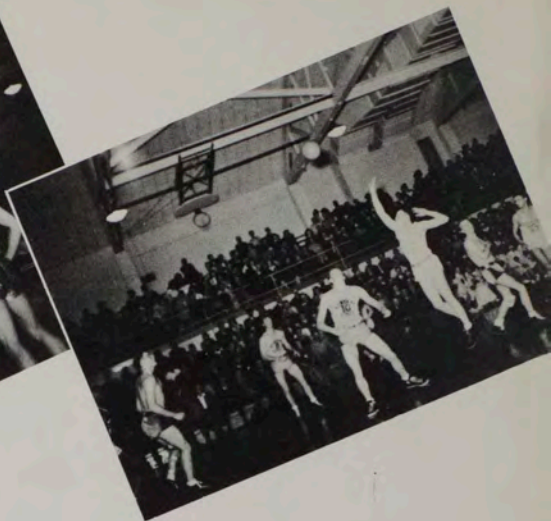
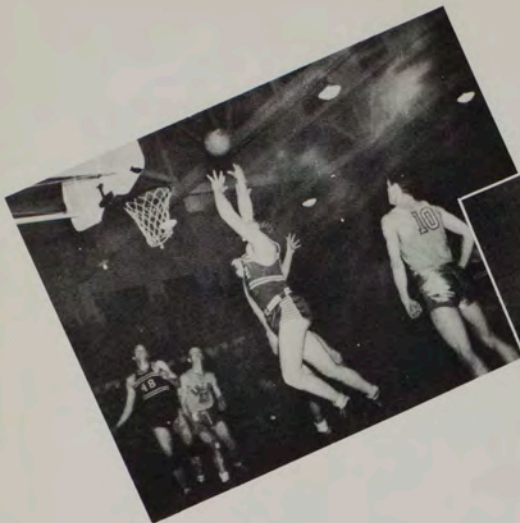
Ray Rieder

Arnold Scott

Tom Tarpo

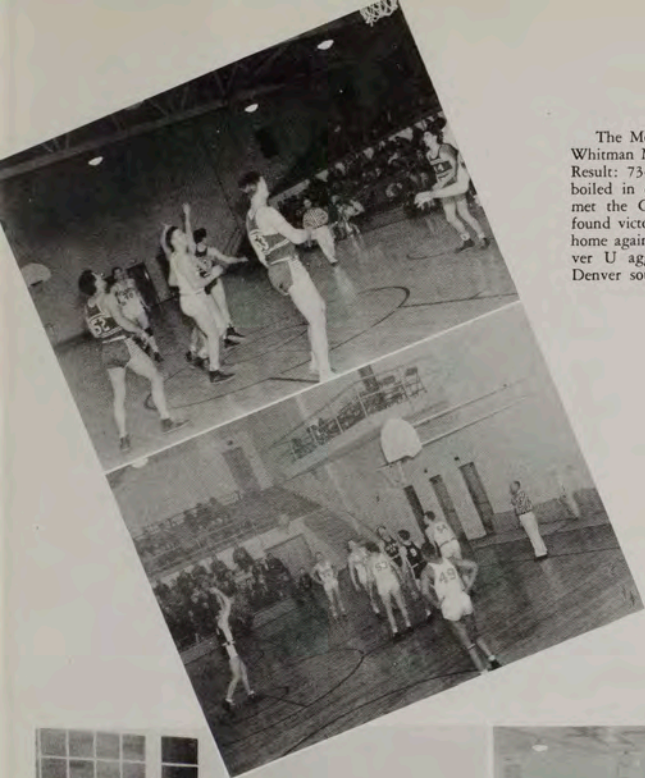
Joe Taylor

Bob Balsam, manager



For the season's first game, Great Falls Army Air Base boys left their Norden bombsights to tangle with the Grizzlies. The Bombers bowed out, 55 to 26. December 27 brought Utah U to take the Grizzlies, 55 to 56. The next night the Grizzlies reversed the procedure. Score: 49-42. The boys then emerged from a four-game tourney with top percentage among the teams entered: Utah Aggies, Montana State, Idaho U. Following a pair of victories from Idaho Southern Branch came the ill-fated Bozeman sojourn. Two unhappy defeats: 55-45, 66-45. Gonzaga's Bulldogs moved to the campus to hand the locals a chastising, but the Grizzlies won the second game.



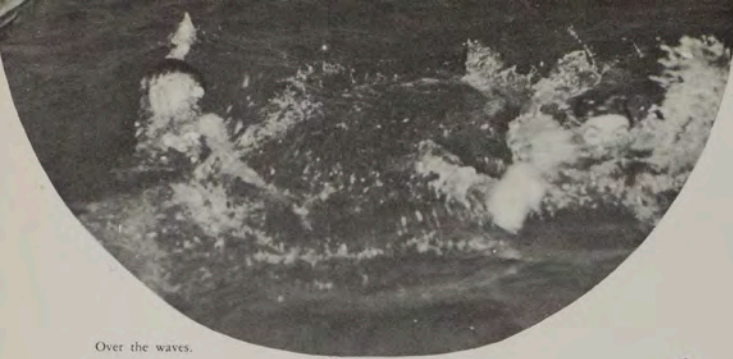


The Montanans journeyed westward to meet the Whitman Missionaries who went on a scoring spree. Result: 73-66. The next night they were properly boiled in oil. Close score: 54-53. The Grizzlies met the Gonzaga Bulldogs for two more games; found victory in the first, defeat in the second. At home again the boys smashed the much-touted Denver U aggregation, 66-61. The following night Denver sought revenge, got it. The score: 49-47.



Then a cloud of darkness fell on the local campus as the Bobcats took the first game in the championship series. In the second game, Chuck Burgess, tossing the last basket of his college hoop career, brought victory to the Grizzlies and a taste of revenge. But to the Bobcats, God bless 'em, went the state championship. . . .





Over the waves.

# Minor

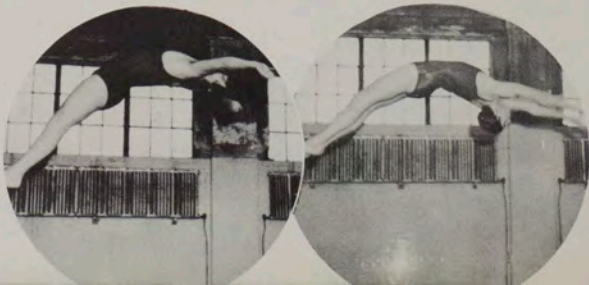


VARSITY SWIMMING TEAM

*Kneeling, left to right: Morris, Bottomley, Jardine, Bell.  
Standing: Misevic, Jesse, Oswald, Voorhees.*

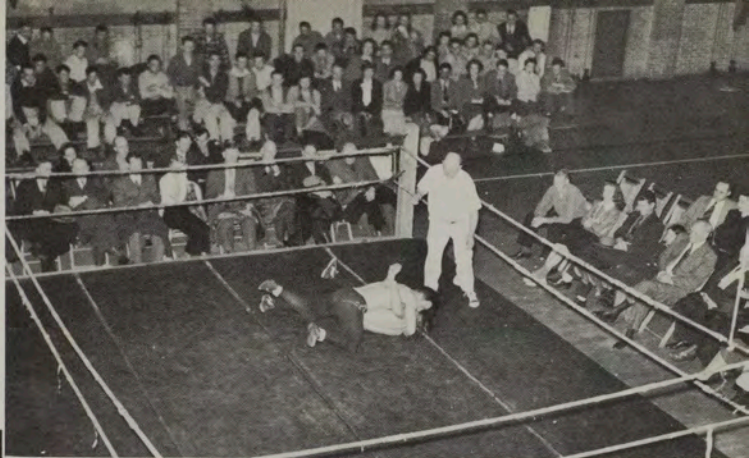
The annual M Club tournament brought out the usual ardent group of leather pushers and grunt-and-groaners. The boys mixed it willingly, and did their best for the dear old M Club treasury—and a trip to Bozeman. Welterweight Champ Peter (Red) McGrath copped the coveted trophy. MSU won the annual minor sports clash with Montana State College for the umpteenth time. . . .

Two prize-winning dives.

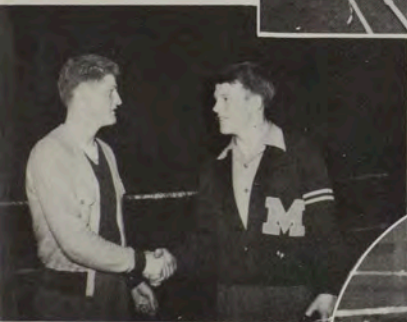




# Sports



Migawd, my spine.



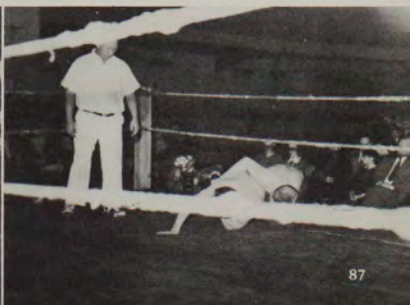
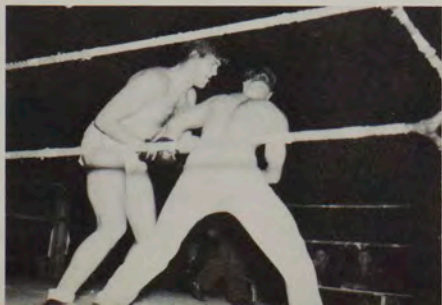
McGrath . . . the winnah.



Blood on the canvas

Shorty and enemy.

Enough rope.



# Panorama



Remember '42 and '43 . . . the games, the dances, the kids . . . wonderful, wasn't it . . . remember . . . remember . . .





Half past two.

The Student Union.

A stroll between classes.



Send me, brother

## RUSH WEEK

Beer and the SAEs.



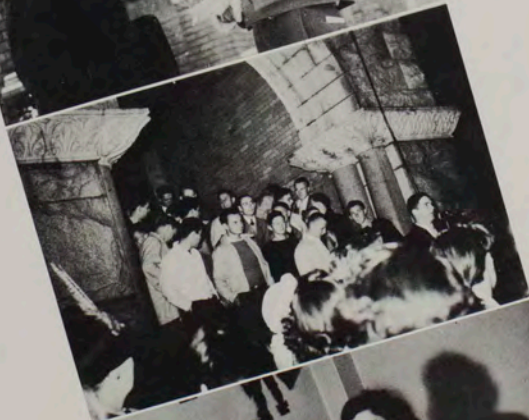


THE FIRST WEEK

Yes, ya gotta get sectionized.



Bradeen and Chief Push.  
The Bear Paws are tapped.  
Two frosh cuties.



SADIE HAWKINS

Sprag and cokes (right).  
A smile from winning 'Lil' Abner Eigemman (below).



Sadie herself.

Gals and wartime books.  
Bandages for-victory.



AND SHORTER, THE GREEKS THREW PARTY AFTER PARTY, AND THERE



Homecoming convo rally (above).  
Idaho and the Little Brown Stein (right).

## HOMECOMING

MSU's frats save the sugar beet crop.



Alpha Phi's Nadler—the Queen.



Sigma Nu barn dance.



And the band played on.

### MORE DANCES

Foresters' bar and clientele.



Food at last.



The Foresters' mob relaxes.





HERE AND THERE

*Navy boys and vehicle.*



The DG's Farnsworth—a sweetheart.

What the hell!

IN THE SPRING



The Greeks dance.  
Aber Day, O, Aber Day.



Where the hell did this come from?

Cathie, Shirley, Irv, and beautiful Bill.



ETCETERA



Journey's end.  
Please, Mortimer, my corns.



Bull session in the sun.

On with the dance.



So then this guy turns over and says, "My gawd, Sadie . . ."





From the gathering  
of faculty-picked  
loveliness on yonder  
Page, John Robert  
Powers, owner of  
New York's famed  
Powers Model Agency  
and noted connoisseur  
of pulchritude,  
selected the six  
most beautiful.

These are the  
Queens of M.S.U.

Gaze upon them,  
gentlemen, and  
sigh deeply.....



Barbara Holter

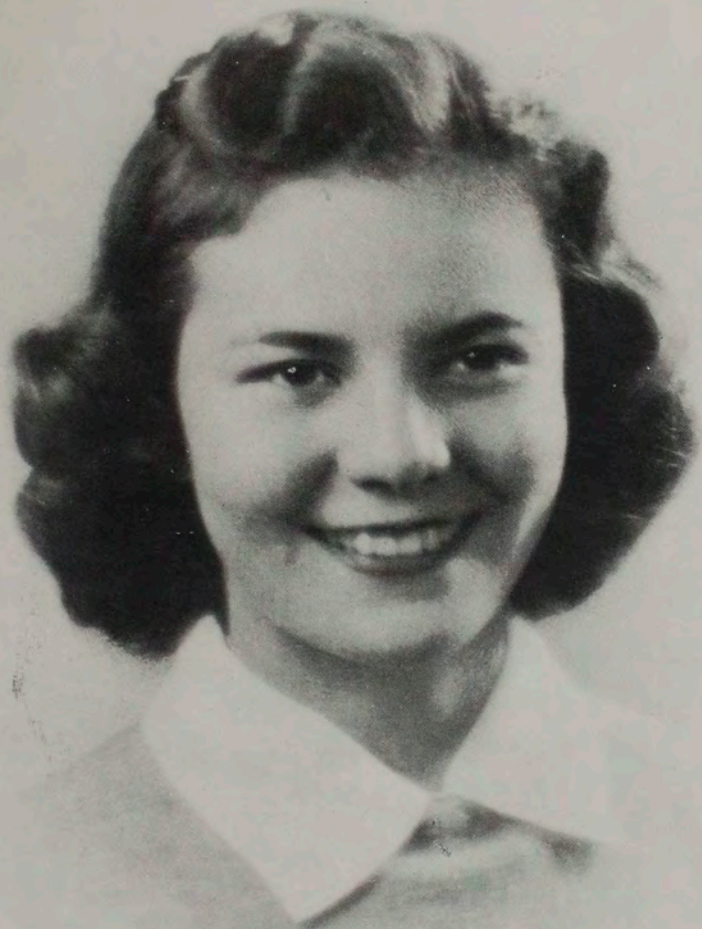


Roberta Myrick



*Helen Walterskirchen*





Dorothy Bunge



Dorothy Lloyd



Sybil Wright

# The Women



Now, Herbert, be sure to get me home by seven so I can keep my date with Lt. Tubbs . . . What does your frat pin look like, Herbert? . . . Herbert, where are you? . . .





women's  
activities

Dorothy Rochon,  
president  
associated women  
students

# AWS



Pat Cohe, secretary



Marie Murphy, vice-president



Pat Lake, treasurer

... governs MSU's seething mass of femininity  
... the group throws Coed Ball at which the  
men take the gals to the financial cleaners ...  
other notable activities include the Student  
Union game room ... AWS board turned gleeful  
this year, managing to campus several way-  
ward coeds ... Rochon, Lake, Murphy and  
Cohe head the female Gestapo. ...



Front Row: McDougal, Hannon, Ficke, DeCock, Weaver.

Second Row: Murphy, Rochon, Cohe, Lake, Webb.

Third Row: Thompson, Templeton, MacHale, Weisbeck, Schafer, Martin.



# W.A.A.

## W.A.A. EXECUTIVE BOARD

*Front Row, left to right:* Hubbard, Templeton, Weisbeck, Carkulis, Rakeman, Kerr, Bugli.

*Middle Row:* Simpson, Harrison, Mornout, Deegan, Garman, Fearl, Landreth, Ruenuaver.

*Back Row:* Wiegenstein, Harlow, Curtis, Willis, Cole, Leary, Johnson, Leaphart, Martin.



Mary Jane Deegan,  
president



Marjorie Harrison,  
vice-president



Elizabeth Fearl,  
treasurer



Betty Garman,  
secretary



Kappa Kappa Gamma and Town Girls' teams tied for first place in hockey tournament.







Mary Leary,  
basketball manager

M CLUB

Viola Zimbleman,  
horseshoes manager



Charlotte Toelle,  
tillery manager



Marjorie Templeton,  
tennis manager



Ruth Simpson,  
speedball manager



Front Row, left to right: Johnson, Harrison, Bugli, Landreth, Williams.  
Middle Row: Deegan, Carkulis, Willis, Leary, Van Cleve, Fearn.  
Back Row: Simpson, Webb, Mornout, Cole, Schiltz, Ruenauer.



Ruby Plummer Strong,  
swimming manager



Louise Mornout,  
volleyball manager

... organizing power of the sports in shorts. Annually conduct women's intramurals during which the gals forget hair-pulling and concentrate on hockey sticks and baseball bats. Unlike the bitter, do-or-die interfraternity league, the coeds play for fun, trim figures and the intramural cup, awarded to the sorority or dorm with highest points. On the social side, WAA gets the amazons together at their annual Fall Rally, Christmas Fireside and Spring Banquet. . . .



Eileen Plumb, president

# Spurs



BAKKE

BAILEY

CHENEY

CLARK

DILLAVOU

ELDER

GRIFFITH

HUNT

McKEE

MacKENZIE

MACKEY

MANNIX

NICHOLS

OLSON

RAKEMAN



Roberta Myrick  
treasurer



Bernice Hansen  
junior adviser



Irene Caras  
vice-president



REPLOGLE



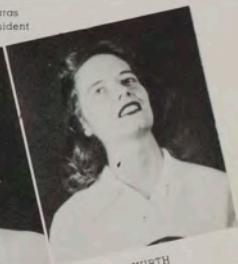
ROTERING



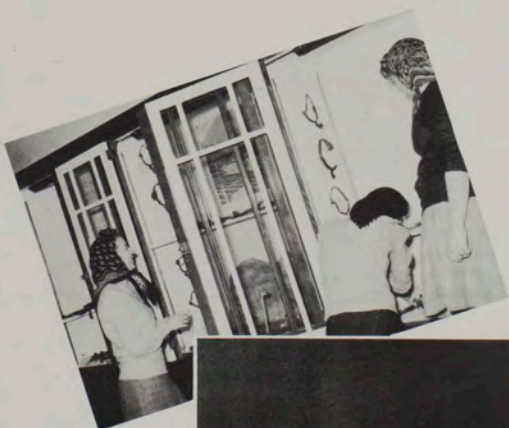
SPALDING



THRAILKILL



WIRTH



. . . national sophomore women's honorary. Lucky lassies are tapped in the spring of their freshman year. 1942-43 crop did usual convo and concert ushering, sold Xmas cards three weeks after Xmas, gave old spur display a much-needed manicure. Regarded with awe by frosh who try to fulfill the scholarship, activities and personality Spur requirements. Exhibit white uniforms, much spirit. . .





Betty Nelson, president

*Alpha*

*Lambda*

*Delta*

... recognizes freshmen women who have maintained a high scholastic index their first two quarters. Activities follow same lines as other sophomore honoraries, but the gals receive much less fanfare for noble deeds done. Helped out during Grizzly Week; did much to keep the bandage room rolling. . . .



BIDDLE  
CHANDLER  
CHENEY  
CLARK  
DILLAVOU

ENEVOLDSEN  
FOOT  
GERHARDT  
LIVDAHL  
OLSON

RAKEMAN  
ROTHERING  
SEMRAU  
SIKONIA  
THRAILKILL

# Mortar Board

... highest goal for activity and scholastic minded coeds. Spring SOS selection is non-political, represents topmost honor bestowed upon senior women. This year's president, Pat Ruenauer, headed the unprecedented number of thirteen members. Exclusive but congenial Mortar Boards built a Bond Shelter for campus bond sales, gave their annual "Smarty Party" for brain trusts. MB is not the end of the trail for the BWOCs, but true honor for outstanding service, perhaps an incentive to post-college success. . . .



Pat Ruenauer, president

Mary Bukvich  
Vicki Carkulis  
Mary Rita Corbett  
Judith Hurley



Ann Johnson  
Peggy Landreth  
Mary Marshall  
Aline Mosby



Betty Nadler  
Dorothy Rochon  
Gail Rounce  
Lucille Williams





# Living Groups

Ice-box raiding at the Sigma Kappa house

# Pan-Hellenic Council

... formerly confined its activities to keeping sororities on the social straight and narrow. This year clamped down on the financial side of the women's houses to insure stable existence for the duration. Cut rush week expenses; ruled each house could present one meager formal yearly. Operated rush week intricacies and awarded scholarship cup. Added functions: financed Red Cross room; aided in bringing prominent speakers to the campus.



Alpha Delta Pi Eleanor Cunningham, president

Barbara Bates, AXO  
Dorothy Borcharding, AXO  
Mary Rita Corbett, DG  
Leona DeCock, AP  
Jo Flaherty, AP



Ramah Gaston, DDD  
Jean Gordon, SK  
Judith Hurley, DDD  
Eleanor Jaten, ADP  
Peggy Kitt, DG



Betty Leophart, KKG  
Mary Marshall, KKG  
Rita Schiltz, KAT  
Shirley Schnee, SK  
Helen Walterskirchen, KAT





Bates  
Borcharding  
Brockman  
Burgess



Cole  
Coverdale  
Elliot  
Farnsworth



Garman  
Gerhardt  
Hansen  
Housted



Johnson  
Kaulman  
Morgan  
Perkins

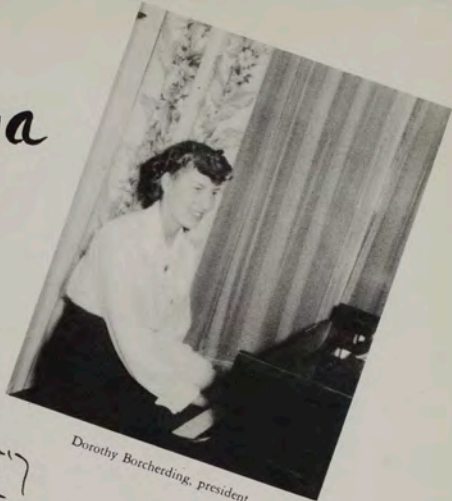


Reed  
Schater  
Warren  
Wood



# Alpha Chi Omega

A notable bevy of journalists,  
musicians, intellectuals, playgirls . . .  
Live in a house of historic splendor  
at the tip of fraternity row . . . rate  
high in social circles . . .



*Dorothy Borcharding, president.*



*and same song, second verse.*



*Sittin' on the steps. . . .*



Atwood  
Bailey  
K. Clark  
M. Clark  
Clements  
Cooper



Criswell  
DeCock  
Fearon  
Ficke  
Flaherty  
Gibson



Hamil  
Hawke  
Kriedel  
Lambkin  
Lamey  
Lawton



Mackey  
Martin  
Milligan  
Mittelschmidt  
Nadler  
Neils



O'Laughlin  
Olson  
Paulus  
Phillips  
Rakeman  
Replogle



Richards  
Rouse  
Savage  
Schmidt  
Selle  
Spaulding  
Strrett



Stricklin  
L. Swanson  
V. Swanson  
Thieme  
Vranish  
Walker  
Zimbelman

# Alpha Phi

A houseful of heavy daters, political bigwigs, sparkling personalities, fun lovers . . . Have the Spur market cornered. . .



Leona DeCock, president.



I've heard that song before. . . .



I've heard that one before, too.



Bakke  
Boatright  
Bugli  
Caras  
Gaston



Grunert  
Haines  
Handel  
Hurley  
Jellers



Johnston  
Keig  
Kuenning  
La Rue  
Lewis



McConnell  
McKee  
Markel  
Nicol  
Ripley  
Robbins



Schneider  
Trask  
Warner  
Wass  
Weaver  
Wright

# Delta Delta Delta

Noble achievements in the campus realms of society, politics, athletics and the theatre . . . Copped a class of freshman cuties . . . an elegant house, elegant girls. . .



Judy Hurley, president.



bull session comin' up.



Where's "Paper Doll?" . . .



Bell  
Bishop  
Brome  
Bunge  
Casto



Coke  
Corbett  
Cuthbert  
Cutts  
Daly



Davis  
Eaheart  
Farnsworth  
Gussenhoven  
Hagen  
Harrison



Hillstrand  
Holmes  
Kinkade  
Kitt  
Linebarger  
Luebben



Lynn  
McGreal  
Madison  
Mee  
Mitchell  
Moody



Morse  
Myrick  
Olcott  
Roholt  
Rotering  
Schell



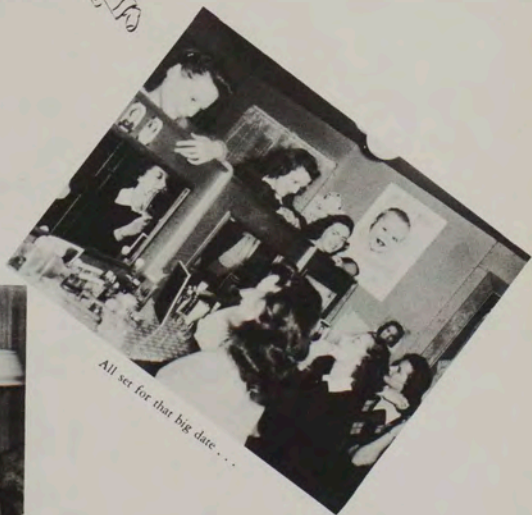
Smith  
Thompson  
Webb  
Wilson  
Witt

# Delta Gamma

A deluge of beauty under one gracious roof . . . Fraternity pins, diamonds, brains and a super-smooth pledge class . . . have quite a monopoly on activities, too. . . .



Mary Rita Collett, president.



All set for that big date . . .



now where is he?



Angelman  
Ashton  
Brutch  
Burke  
Clopp  
Corbin



Deegan  
Dillavou  
Duncan  
Filer  
Ford  
Frach



I. S. Fraser  
L. Fraser  
Frisbee  
Geis  
Gillespie  
Gorr



Hunt  
A. Johnson  
K. Johnson  
Krazel  
Landreth  
Leonard  
Lloyd



MacKenzie  
Morley  
Morrison  
Mosby  
Olson  
Perry  
Pettersen



Rae  
E. Regan  
M. Regan  
Rochan  
Roma  
Ruenauer  
Sackett



Scherrer  
Schilt  
Scott  
Shirley  
Templeton  
Walterskirchen  
Warden



# Kappa Alpha Theta

Numerous activity gals, beauties, top students, wits . . . Have more than their share of frat jewelry, an enviable reputation for giving smart parties, a telephone that never stops ringing. . .



Rita Schilz, president.

what's new in pajamas.



Dinner at the Theta house . . .



Armstrong  
Beaman  
Carroll  
Chesney  
Cowell  
Darham



Elder  
Ford  
Gosman  
Grigsby  
Hans  
Hannon



Holler  
Hough  
Kerr  
Lake  
Leaphart  
Mann



Mannix  
Marshall  
E. Murphy  
M. Murphy  
Ringling  
Risser



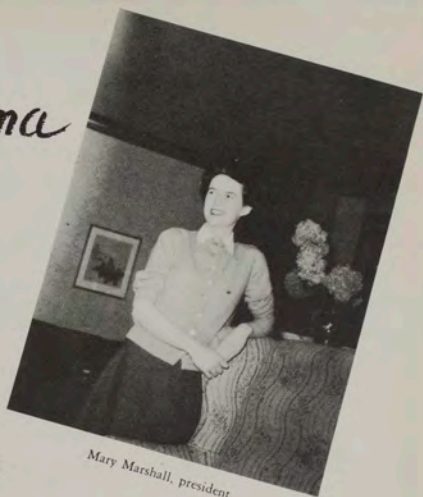
Rounce  
Shalter  
B. Sias  
J. Sias  
Smais



Smart  
Smith  
Strachan  
Thraikill  
With

# Kappa Kappa Gamma

Aristocratic as their magnificent mansion . . . Sophisticated, worldly, glamorous, brainy . . . are equally at ease in a snowball fight or at a formal dance . . . Known for their Xmas serenade, front porch pillars and heavy dating. . .



Mary Marshall, president.



and a staircase full of stars.



Kappa beauties grace their famous mirror . . .



Arrivee  
Carruthers  
Cherry  
Cross  
Crowley



Farrington  
Fearl  
Gordon  
Grasseschi  
Griffith



Hanson  
Hollensteiner  
Hubbard  
Jenkin  
Johnson



Ketfeler  
MacDonald  
MacHale  
M. Manix  
S. Manix



Milkwick  
Mincott  
Schnee  
Semrau  
Sikonia



Swenson  
Thompson  
Toelle  
Waite

# Sigma Kappa

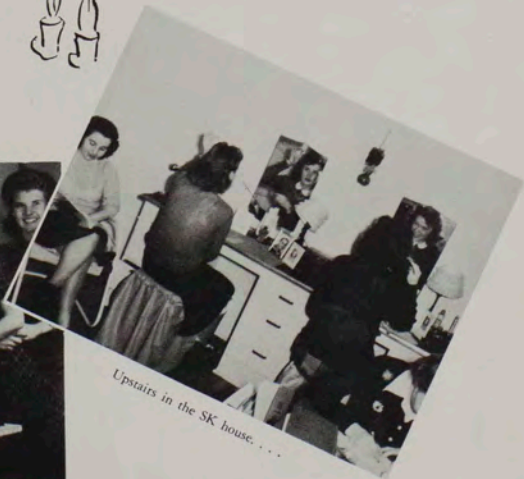
A charming house filled  
with charming girls . . .  
Famed for their brilliant  
hospitality, scholarship  
achievements, activity  
women . . .



Shirley Schnee, president.



nobody listening anyway.



Upstairs in the SK house . . .



C. Anderson  
M. Anderson  
Angstman  
Ashtor  
Belleleur  
Benson  
Brackman



Brutch  
Chauvet  
Crum  
Davis  
M. Doyle  
V. Doyle  
Elliot



Frach  
I. S. Frases  
L. Fraser  
Gibson  
Grigsby  
Grunert  
Handel



Leona Halter  
Leota Halter  
Hough  
Jellens  
Johnston  
Keig  
Kuehn



Kuenning  
LaRue  
Luebben  
Phillips  
McCabe  
McCarthy  
McConnell



Mannix  
Markel  
Marquis  
Martin  
Mitchell  
Olson  
Peterson  
Reed



Robbins  
Rogers  
Sackett  
Scherrer  
Smart  
Sneath  
Spruell  
Stephens



Stephenson  
Sugrue  
Trank  
Trauler  
Tronrud  
Warner  
Wright  
Yunker

# North Hall

A dormful of Frosh lovelies . . .  
Enthusiasm, naivete, a controlling  
interest in campus maledom, the  
youngest housemother on record . . .  
Joined the others in giving up their  
quarters to army boys. . .



*Cora Mae Cuthbert, president.*



*Room decorations a la Ringling . . .*



and a sizeable collections of scalps.



Baker  
Bell  
Biddle  
Bruce  
Buchholz  
Buntin  
Burns



Calman  
Carkulis  
Coverdale  
Curtis  
Dahl  
Demopoulos  
Eliot



Enevoldsen  
Ford  
D. Frame  
J. Frame  
Galer  
Hamil  
Hankinson



Harrington  
Hodges  
Hubbard  
Irvine  
Ivankovick  
Kestle  
Lamey



Leary  
B. Lorenz  
D. Lorenz  
MacDonald  
Malaskey  
Martin  
Marra



Masini  
Mayer  
Menard  
Metzer  
Mitchell  
Mornout  
Nelson



Neils  
Owens  
Pease  
Pomeroy  
Raess  
Rasmussen  
Replogle



Roberts  
Romasa  
Scifers  
Scott  
Slack  
Swab  
Toothaker  
Van Cleve



Vranish  
Wilcox  
Willis  
Wolfe  
Wiegenstein  
Wright  
Yurmon  
Youngstrom



# New Hall

Fun girls, glamour girls, scholars—all tucked into MSU's most beautiful dorm . . . Tops in intramural sports . . . They, too, were evacuated in the wake of the incoming army. . .



*Kay Willis, president*

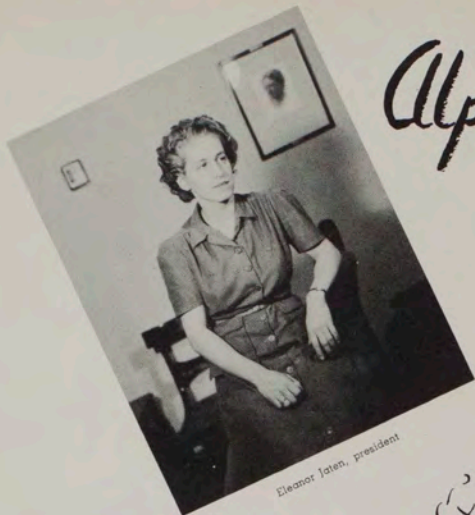
and the New Hall birthday dinner.



*After-hours spread . . .*



# Alpha Delta Pi



Eleanor Jaten, president

A distinctive group of career-bound scholars . . . Live in quiet dignity, claim the president of the all-powerful Pan-Hel council. . . .



Cunningham  
Curtis  
Emerson  
Hanson

Jaten  
Kuehn  
McDougal  
Pott  
Zokos

# Montana Coeds



... study, but never too hard.



... follow those "85% dorm rules.



... indulge in after-dinner henning.



... make much ado over formal society.



... go half insane with joy over male phone calls.



... go entirely so when confronted with this.

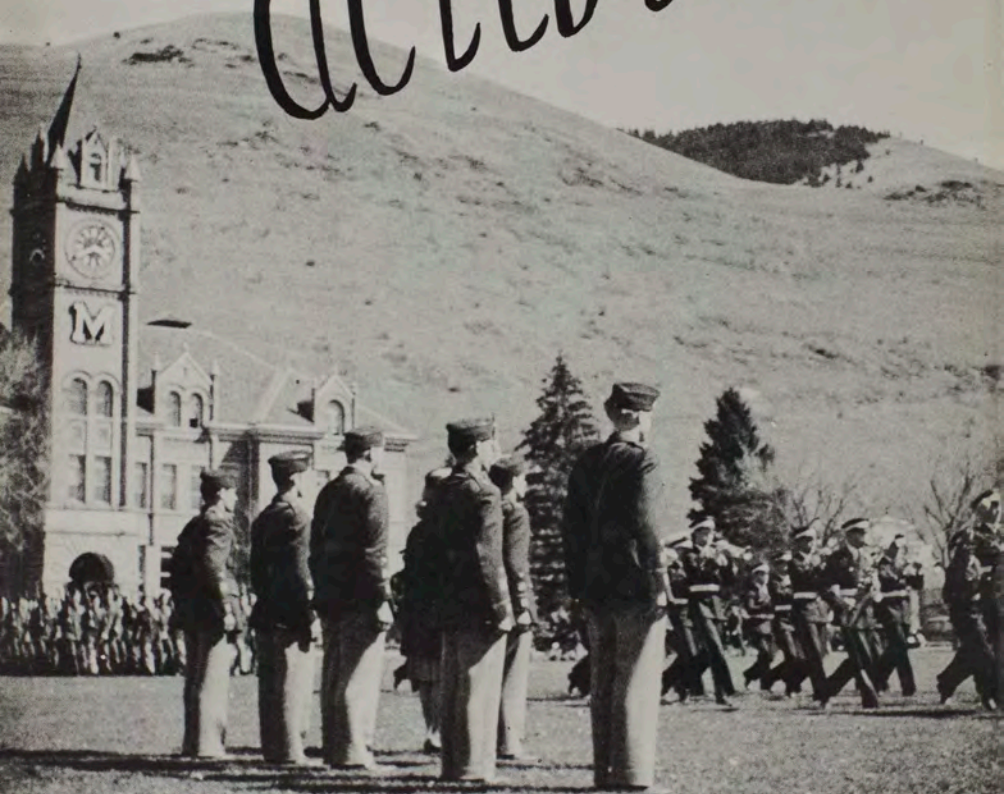
# The Male Animal



For whom the belles toil . . . it takes all kinds,  
and we've lived with 'em . . . he swipes my ties,  
wolves on my girl—meet my roommate, he's a swell  
guy. . . .



# men's activities



Monday afternoons  
spring quarter

# R. O. T. C.

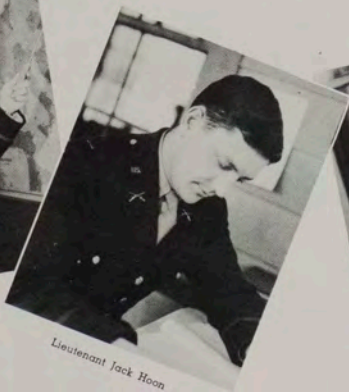
... once a phase of the campus curriculum which inspired only bored indifference. Came Pearl Harbor and the new spirit. Now a vital part of our great victory machine, the superbly staffed R.O.T.C. trains young men for service and action as army officers in a wartime world. . . .



Lieutenant Colonel Lewis Norman



Captain George Misevic



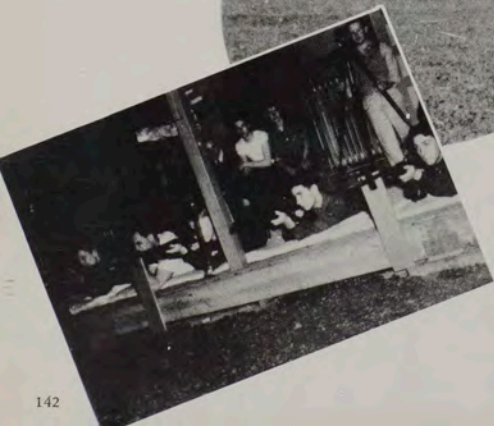
Lieutenant Jack Hoan



Lieutenant Arnold Berglund



Sergeant Frank Stanek  
Sergeant Burnie Eubanks  
Sergeant Earle Lane



Montana men salute the colors . . . prepare for the fighting front through classroom instruction, target practice. And the R.O.T.C. passes in review.



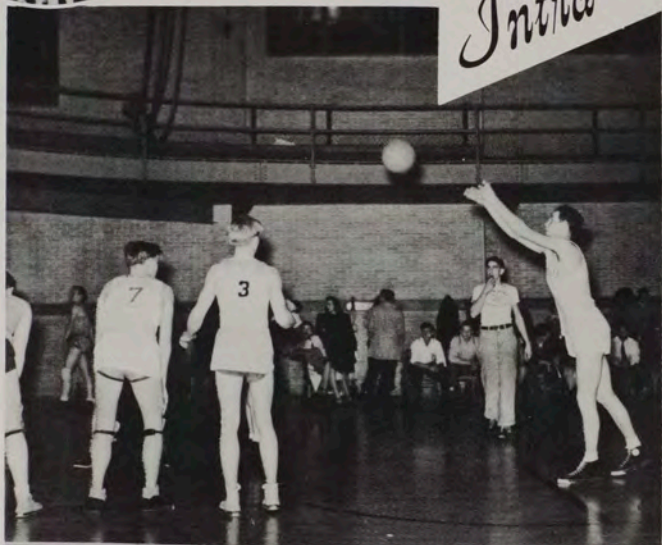
# Flying high

Through the summer and fall quarters Corbin was jammed with handsome Navy Air Corps trainees. Then came a deluge of army air cadets-to-be, who took over every residence hall on the campus. Such a mass of the military made MSU look like a second front, solved the manpower shortage for love-starved coeds.

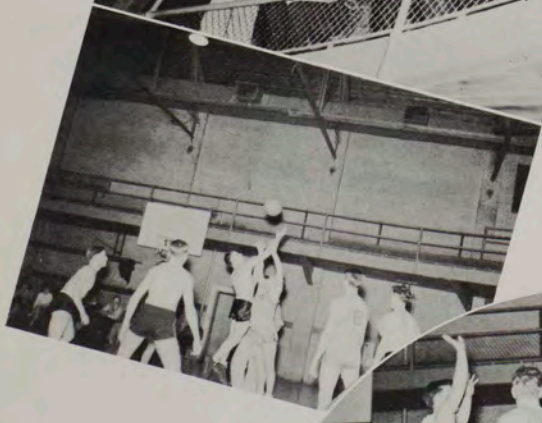




# *Intra*



# Murals



Out of the surge of battle on a gore-soaked Clover Bowl field only one team emerged gloriously triumphant—the Navy V-5 trainees. Second in the league and first among fraternities was Phi Delta Theta. A basketball race that was nip-and-tuck from start to finish saw Sigma Nu take first place. Final results in swimming and bowling gave the Phi Deltas championship titles in both departments. . . .



Jim Macintosh  
chief grizzly



Jack Haken  
left paw



Jack Buzzetti  
right paw



ALEXANDER



BALDWIN



BERGER



BOWMAN



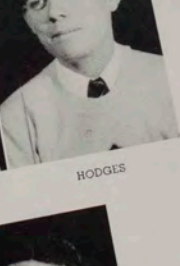
DI RE



FELT



HESSER



HODGES



JOHNSON



MILLER



MLYNEK

# Bear Paws



RIVEN

SCHILLER

SCOTT

SIMONS

SULLIVAN



SCHWAB

THIEBES

TRETHERWEY

WELDIN

... Montana's chapter of Intercollegiate Knights, national sophomore men's honorary. Tapped at a fall SOS, Bearpaws are the counterpart of their sister Spurs but don't show quite the energy. Usual activities curtailed this year—no bonfires to build, no home games, etc. Regarded as the symbol of campus spirit and a political whistle-stop to bigger and better things. . . .



# Silent Sentinel



Harry Hesser, president

... though not a national honorary, stands high at Montana U as the aim of its outstanding men. Members are chosen, not necessarily for the record they have made for themselves, but for what they have done for the University, and what they can do in the future. This year's group, though depleted by the Selective Service Board, represents the BMOCs, the guys who did their bit. How and what they did is unknown, hence the name. . . .



Tony Evanko

Roy Fenton



Bill Leaphart

Scotty MacLeod

Homer Thompson



group  
the  
stable

# Living groups

In the cellar  
of old Sigma Nu...

# Fraternity Presidents

## Council



Sid Kurth, president  
Sigma Chi

... in the good old days, went by the monicker of Interfraternity. Came the Phi Delt-Sigma Chi Vigilante coup d'etat, and the Greek legislators dissolved amid much thunder. Now merely worried fraternity presidents are the link that binds male Greekdom. Lesser numbers lead to better deeds, for the council cracked down on dirty rushing. Also tossed the Gingham-Cords dance after Bobcat series. Reek of brotherly love, for all united by common fear of draft-depleted chapters. After the war comes the reckoning. . . .



Dutch Dahmer  
Phi Sigma Kappa



Leonard Lambkin  
Theta Chi



Evie Morris  
Phi Delta Theta



Homer Thompson  
Sigma Nu



Fred Weber  
Sigma Alpha Epsilon



# Montana Men -

Fill in spare time with an honest game of cards . . .



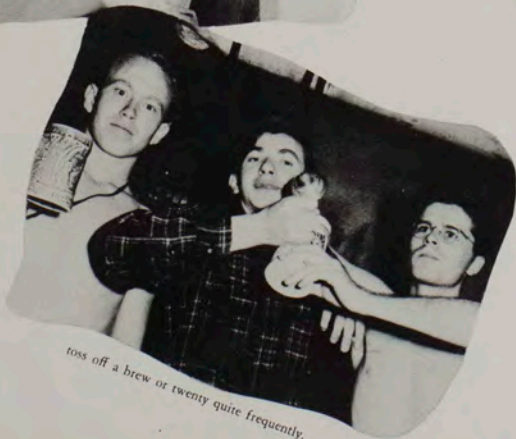
get hep on the phone the week before Coed . . .



hit the books now and then . . .

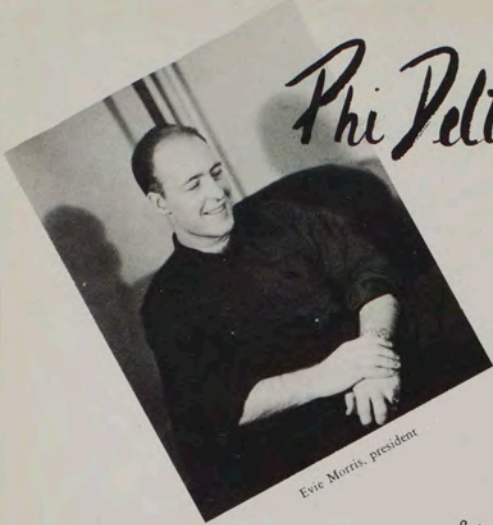


never quite make those 8 o'clocks . . .



toss off a brew or twenty quite frequently.

# Phi Delta Theta



Evie Morris, president

Keepers of intramural trophies . . . An inspiring assortment of girl-wise party boys, big shots, little shots, men of the world . . .



Tossing off a brew after an intramural victory . . .



pulling beets for Uncle Sam.

Alexander  
Baker  
Barnett  
I. Beck  
S. Beck  
Burke  
Cuthbert



DeGroot  
Dolan  
Donovan  
Duffy  
Egeman  
Gray  
Greene



Greene  
Gulbrandsen  
Halseth  
Hasterlik  
Heerwald  
Hesser  
Houston



Houtonen  
Hughes  
Iager  
Jardine  
Jellers  
McElwain  
J. F. MacDonald



J. W. MacDonald  
Marris  
Nelson  
O'Connell  
O'Rourke  
Pearson  
Federsen



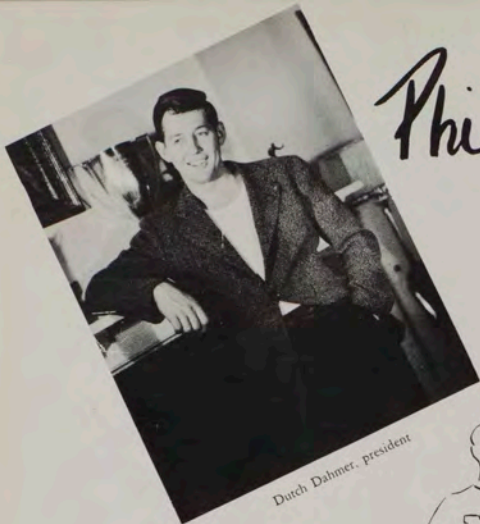
Peterson  
Riaken  
Robinson  
Sharlock  
Starley  
Stegner  
Stephens



Sullivan  
Templeton  
Thibbes  
Temper  
Turnquist  
Voorhees

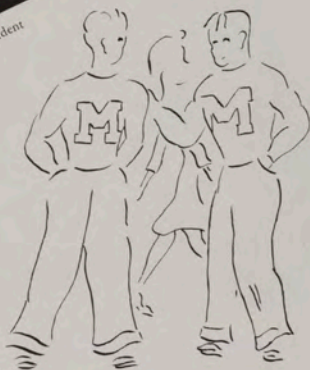


# Phi Sigma Kappa



Dutch Dahmer, president

Keepers of big athletes  
... heavy drinkers, heavy  
lovers ... Their annual  
Coffee Dan's, a shindig to  
outdo all shindigs. ...



Famed Coffee Dan's ...



Tiger sits around with the boys.

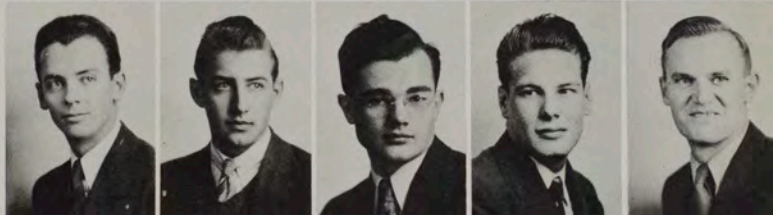
Beattie  
Chebul  
Christensen  
Dahmer  
Ferris



Filicetti  
D. Fox  
R. Fox  
Glen  
Hammerness



Hanson  
Hardisty  
Jahlonaki  
Jameson  
Lawler



Merritt  
Monson  
Nyquist  
Obrecht  
O'Connell



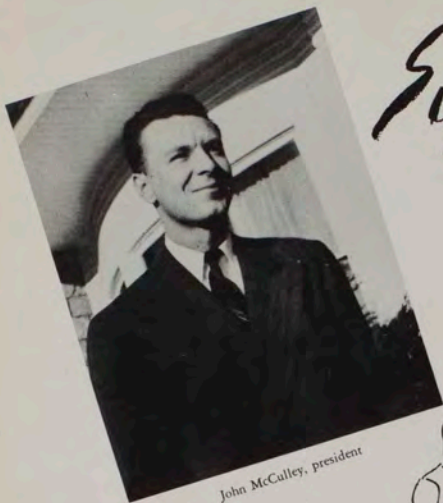
C. Rigg  
P. Rigg  
Samsel  
Sanderson  
Savage  
A. Scott



H. Scott  
Sims  
Sooy  
Tarpo  
Taylor  
Wilkinson



# Sigma Alpha Epsilon



John McCulley, president



Keepers of tradition . . .  
Much entertaining, much  
good fellowship, much  
dating, much rivalry. . . .



Getting that two-year dust off. . . .



Migawd, not so loud, please.

Ackerlund  
Ashby  
Asher  
Ballas  
Barnes  
J. Bellucci  
L. Bellucci



Bertoglio  
Brady  
Bramon  
Brown  
Caras  
Cline  
Eastman



Fisher  
Gamble  
Gemberling  
Gillen  
Gordon  
Hansen  
Heidel



Hennessey  
Hysan  
C. Johnson  
H. L. Johnson  
H. C. Johnson  
Karlberg  
Koetier



Lyll  
McCully  
McGrath  
Mather  
Meyer  
Morgan  
E. Nelson



J. Nelson  
Parker  
Pitts  
F. Rasmussen  
N. Rasmussen  
Redpath  
Richards



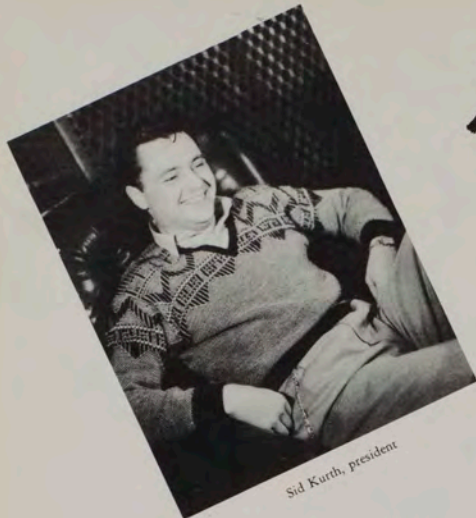
Robinson  
Rudman  
Silk  
Stevens  
Strekoll  
Swanson  
Templer  
Tweto



Wallander  
Weaver  
Weber  
Wedin  
Welch  
Whittaker  
Wilkinson  
Wise

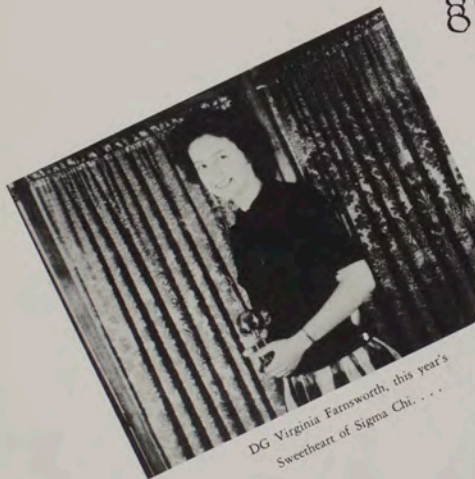
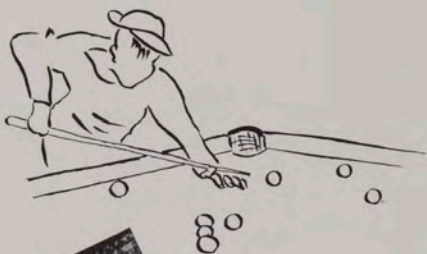


# Sigma Chi



Sid Kurth, president

Keepers of the house beautiful . . . Introduced a sweetheart, a hostess; lost pins to co-eds but no prestige . . . tops among novel party givers. . . .



DG Virginia Farnsworth, this year's Sweetheart of Sigma Chi. . . .



Sigs playing pool for a change.



Anderson  
Bloom  
Barger  
Brackett  
Brown  
Buckmiller  
Burdick  
H. Campbell



P. Campbell  
Colby  
Conner  
Drum  
Enrick  
Emswiler  
Everin  
J. Felt



T. Felt  
Fleming  
Farbe  
Giannoulis  
Gillespie  
Grady  
D. Greaves  
J. Greaves



Gundel  
Haines  
Harkins  
Hill  
Hodges  
Holden  
Jahnke  
Jesse



Jones  
Kampfe  
Kurth  
Larsen  
B. Leaphart  
C. Leaphart  
D. Leaphart  
Lee



Legge  
McClintock  
McDonald  
MacIntosh  
Maynard  
Miles  
Morin  
Murray



Myers  
Ottman  
Peterson  
Ritter  
Robertson  
Scheeler  
Scott  
Simons

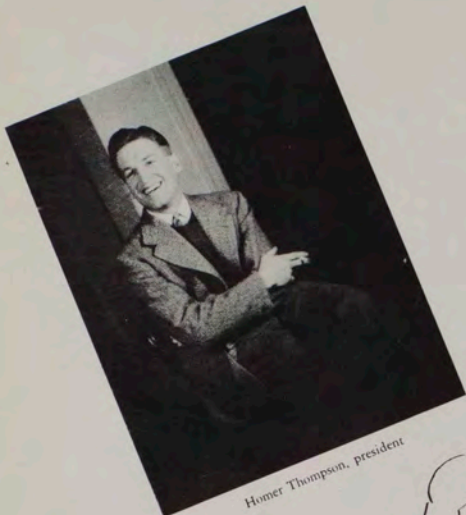


Sweeney  
Tawney  
Thompson  
Voldseth  
White  
Wilcox  
Wuerthner  
Young

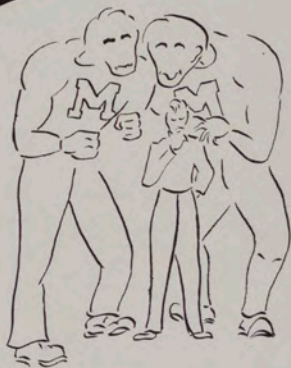


# Sigma Nu

Keepers of school spirit,  
super pin-hangers, super  
rushers . . . Their barn  
dance, a yearly classic. . .



Homer Thompson, president



Stop me if you've heard this one . . .



the Petty girl, as usual,

Aberge  
Anderson  
Arns  
Aselind  
Baldwin  
Beaman  
Birk  
Bonde



E. Bottomly  
R. Bottomly  
Bowman  
Bradeen  
Bullis  
J. Burgess  
E. Burgess  
Buzetti



Chiloote  
Cromwell  
Curran  
Davensport  
Davidson  
Delaney  
Demson  
A. DiRe



H. DiRe  
Dobson  
Findell  
Fowler  
Gardner  
Gasser  
Golder  
Hogan



Hickel  
Hill  
Hopkins  
Horn  
Houck  
Hoyt  
Jacobson  
Johnson



C. King  
W. King  
Kinkade  
Krone  
Loendorf  
McDonald  
Marshall  
O'Loughlin



O'Shea  
R. Parker  
T. Parker  
Eweder  
Robb  
Sandon  
Schaller



Sheehy  
Skvie  
Smith  
Thompson  
Unfred  
Weed

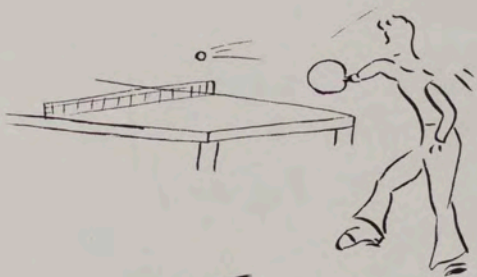


# Theta Chi



Leonard Lamkin, president

Keepers of the ping pong table . . . politicians, personality kids . . . Always a threat in interfrat athletics. . .



You really wouldn't do it . . .

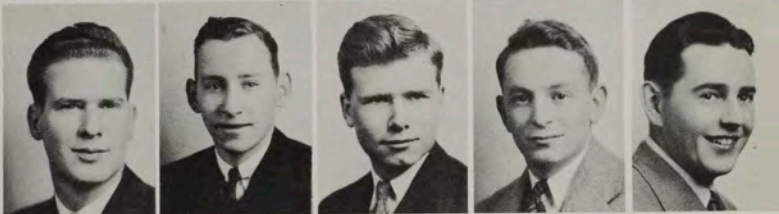


the scrap book gets a once over.

Amos  
Anderson  
Bloom  
Campbell  
Connell



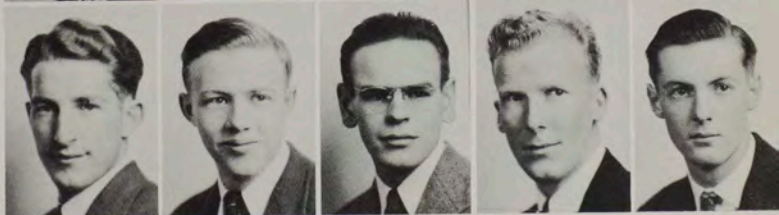
Corin  
Danielson  
Dorsett  
Gans  
Green



Hall  
D. Huck  
R. Huck  
Jensen  
Knowlton



Lambkin  
Lodders  
McGladier  
MacLeod  
Miller



Muskett  
Myklebuust  
Orser  
Ruppel  
Schwab



Stirratt  
Syles  
Trettheway  
Watkins  
Wendt



# South Hall



William Grater, president.

Keepers of the independent spirit . . . No longer a home for flaming youth; frosh, soph, junior and senior mingled together in this gay and cosmopolitan men's club . . . Then came the air corps cadets.

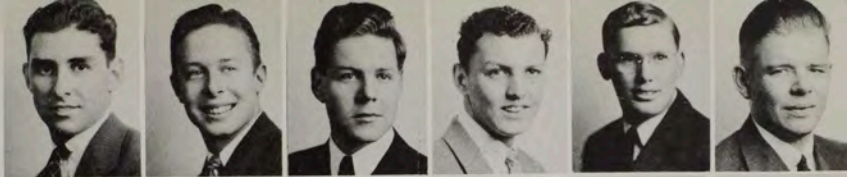


Hardly hungry at all. . . .



ah Coed Ball, a man's last chance.

Angellof  
Beck  
Boe  
Bosone  
Brown  
Cleveland



Davidson  
Dugan  
Ebert  
Hoynes  
Heerwald  
Hesser



Houtonen  
Humphrey  
Jacobson  
Jensen  
Krout  
Larson



Likes  
Listerud  
Martin  
Mercer  
Morrison  
F. Nelson



G. Nelson  
H. Nelson  
Pelley  
Perkins  
Rasmussen  
Rhoads



Robinson  
Romstad  
Samsel  
Scott  
Smith  
Stainsby



Taylor  
Voorhees  
Wallace  
Watkins  
Wilkinson  
Willey  
Wylder



# Student Co-op

... a progressive organization which has grown steadily on the Montana campus since 1938. Now consists of Men's Co-op house, Women's Co-op house and batching students. The groups place emphasis on co-operative working and living; all band together for meetings, informal dances. Active in campus activities.



Co-op coeds relax after dinner . . .



*Seated, left to right:* Rodgers, Otte, Rev. Bats, Raymond, McGregor, Cummings, Weisbeck, Sanders, Prof. Clark, Robertson, Stanley, Kurtz, Chandler, Bakken, Cole, Baird, Bailey, Mrs. Kershew, Egeland, Dean Miller.

*Standing:* Thompson, Schulz, McElfrish, Jakobson, Hodges.



### SCA OFFICERS

DeBoer, Bachelors Buying Club representative; Imbert, vice-president; Robertson, secretary; Harker, president.



*Seated, left to right:* Holte, Mrs. Turner, Maki, R. DeBoer, Imbert, Wolf, Taylor, E. Athearn, MacNeill, Reinertson, M. Athearn, Giffen, Appel, Larson, Hakola, Wheeler, Lampi, Foot, Aspevig, Whitesitt, Larsen, M. DeBoer.

*Standing:* Matye, Lundgren, Wedum, Rieger, Harker.



**WOMEN'S CO-OP OFFICERS**  
 Imbert, secretary; Otte, treasurer; MacNeill, manager; Chandler, president.

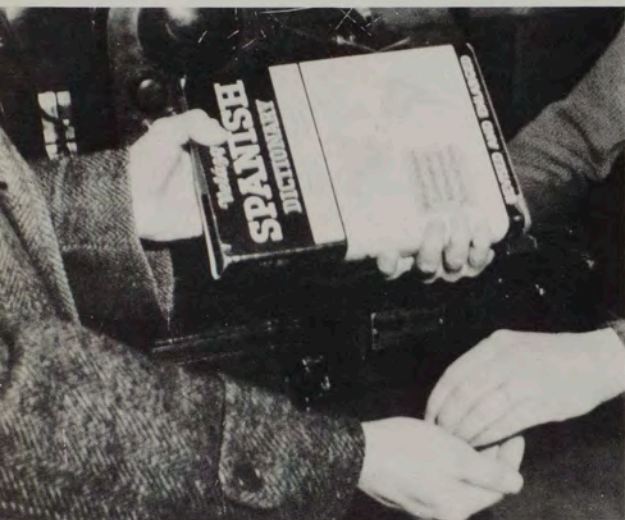


**MEN'S CO-OP OFFICERS**  
 Isaacson, president; Holte, manager; Bailey, secretary; McElfish, treasurer; Murray, vice-president.

Mealtime at the Men's Co-op . . .



# Advertising



On these pages are represented the firms whose support made this year-book possible. To them I extend my deepest appreciation. Handling this year's Sentinel advertising was no easy task. Without the aid of the faithful few on my staff the campaign might never have been successful. So, many thanks to all who gave me a hand, and a special word of gratitude to Tommy Robinson, Hugh Campbell, Don Heidel and Bill Miles.

Neal Rasmussen

clothes of distinction

are found  
at

king's dress salon

806 wilma building

**MODERN  
BUSINESS  
COLLEGE**

ALL BUSINESS COURSES  
DAY and NIGHT CLASSES

PREPARE for Civil Service  
Phone 2202

Drew-Streit Co.

Loans - Bonds - Real Estate

INSURANCE OF ALL KINDS

Missoula

Montana

**E. L. Huff's  
Teachers Agency**

Offer

Free Life Memberships

**ENROLL NOW**

UNIVERSITY  
and HELEN

**COME IN AND SEE**

Our

FREEMAN SHOES  
CAMPUS CORDS  
WEMBLY TIES  
VAN HEUSEN SHIRTS

**DRAGSTEDT'S**

GET YOUR

SUPPLIES AT

The  
**Office Supply**  
Company

115 W. Broadway

Clothes for Coeds

at

**LA COMBE'S**  
FUR and DRESS  
Shop

200 HIGGINS

# STUDENT HEADQUARTERS

*The*

# ASSOCIATED STUDENT

*Store*

STUDENT UNION

ON THE CAMPUS

FUN, EATS, REST,

SCHOOL SUPPLIES

---

**J. M. LUCY & SONS,**  
INC.

HOME and OFFICE FURNISHINGS

Phone 2179

MISSOULA

MONTANA

---

The  
**BEST**  
of SERVICE

KEEP YOUR CAR  
IN TOP CONDITION!

Phone 6262

**DALY MOTOR CO.**

223-225 E. MAIN ST.

**F**or a fine treat  
**DRINK**

*Coca-Cola*

IN BOTTLES

**Majestic Bottling**  
COMPANY

SUPERIOR FOUNTAIN *Service*

# HOLLYOAK DRUG STORE

WHERE FRIENDS MEET!

---



**THE FINEST**

IN

*Jewelry*

AT

*The*

**B & H JEWELRY CO.**

---

**SPORTING & FISHING  
GOODS**

AT THE

**Barthel Hardware**



'twas the day before Coed . . .

When You Need a . . .

Plumber or Steam Fitter

Phone 6669

# Missoula Hardware & Plumbing Co.

## DIXON

and

## HOON

extend

*Congratulations*

to

THE CLASS OF '43



The Right Place  
To Eat

## ROGER'S CAFE

UNION BUS DEPOT

118 W. Broadway

Phone 6902

W. H. McALLEP, Mgr.

# ACE WOODS

PHOTOGRAPHERS  
FOR THE 1943 SENTINEL

Higgins Avenue - By the Bridge  
DON YODER, Prop.

Family Portraits - Commercial Views  
Frames - Copies  
Coloring - Photostats

FOR ALL EXCELLENT WORK, SEE US!

# The First National Bank of Missoula

OFFICERS AND DIRECTORS

THEODORE JACOBS, President

F. M. ELLIOTT, Cashier

R. H. DICK, Ass't Cashier

HOWARD TOOLE

S. J. COFFEE

WALTER POPE

## STOP 'N SHOP

No. 1

East Broadway (Opposite Post Office)

No. 2

Corner Woody and Alder Streets

No. 3

Ronan, Montana



Off to the library . . .

### A word about buying on the spur of the moment . . .

Every one knows that careful planning makes for better buying. And this is especially true of clothes.

Clothes money has to do a special job these days. It's necessary to wartime morale for us to be well-dressed. At the same time, the clothes we buy should cost as little as possible: War Bonds are much more important. Wardrobes should be planned to harmonize, so that a few clothes will provide variety. The basis of every woman's wardrobe is a good coat and dress. As always, we've planned our stock early so you can choose yours now, and pay for it in small weekly amounts. In that way you will have your apparel when you need it, without a big, all-at-once expenditure that might interfere with your regular purchases of War Bonds.

# PENNEY'S



**TEXACO  
PRODUCTS**

An A-1 Station  
For Your Ration

**STAN SMART**

Newest Fashions  
That Are Less Expensive

*Buttreys*

Phone 2992  
220 No. Higgins

**GET YOUR**

Greeting Cards

Gift Novelties

Kodak Finishing

Portraits - Books

Pictures and Frames

Cameras and Supplies

AT

**McKAY**  
ART STUDIOS



Spring quarter . . .



**ALWAYS INSIST ON**

## **"COMMUNITY"**

PASTEURIZED MILK AND CREAM  
JOHNSTON CHOCOLATE FLAVORED

MILK

COMMUNITY BRAND BUTTER  
SHEFFORD'S WISCONSIN CHEESE

GOLDEN NUGGET BUTTERMILK  
ICE CREAM

## **Community Creamery**

"The Family Bank"

# **The Western Montana National Bank**

Established 1889

Missoula, Montana

### OFFICERS

W. L. MURPHY, President

PAUL S. GILLESPIE, Vice President

NEWELL GOUGH, Vice Pres. and Cashier

ELMER STOWE, Assistant Cashier

H. O. BELL, Director

W. L. LEBSON, Director

**Member Federal Deposit Insurance Corporation**

## **University Grocery**

GROCERIES - DRUGS

Cigarettes - Candy

Soft Drinks

DOBBS & MALLORY & PORTIS  
HATS

KUPPENHEIMER CLOTHES  
CROSBY SQUARE, FLORSHEIM  
SHOES

FORESTERS' EQUIPMENT  
JAYSON SHIRTS

AT . . .

*Yandt's*  
**MEN'S WEAR**

*Missoula's Finest . . . Most Modern Hotel*

# HOTEL FLORENCE

MISSOULA, MONTANA

The New Florence typifies the young and energetic spirit of the West . . . Always striving for new horizons in its line of endeavor.

**Conference Rooms  
and  
Banquet Halls  
Available  
for  
Special Occasions**

The New Florence offers ideal surroundings for sorority and fraternity dances and dinners. Plan your next event here, or let us plan it for you.

Visit The Blue Fountain and Coffee Shop

150 Rooms - Fire Proof - Air Conditioned - Reasonable Rates

RAWLINGS  
ATHLETIC  
EQUIPMENT

## A. M. HOLTER HARDWARE CO.

State Distributors

HELENA

::

MONTANA



Hittin' the books . . .

The Store Made Famous  
By Fashionable Women

**EMIL MARIANS**  
*Modes of the Moment*

14-16 N. MONTANA ST. BUTTE

209 MAIN ST. ANACONDA

Featuring Hollywood Clothes

# Men's Shop

R. H. Dragsted, Prop.

Feminine Apparel at . . .

**ED MARAN'S**

"Your Style Defender"


48 W. Park

Butte

Congratulations . . . Class of '43

# THE HUB

George T. Howard, Prop.



Buy your moderately-priced fashions in a quality fashion store . . . You profit by its fine taste, standards, and experience, whether you spend much or little.

Since 1902

**HART - ALBIN COMPANY**

Billings, Montana

NOT an inch of our country has been devastated by bombs. Our people do not have to walk our streets with one eye cocked to the sky and both ears open for the warning to duck into a bomb shelter. In the past few months the trend has been in our favor in every theater of war. Our men, wherever they are, now are getting materials with which to fight and its effect will be felt in ever-increasing ratio.

IT IS unreasonable to suppose that any food will be allowed to spoil in the fields in 1943 for lack of containers or farm labor.

IT IS also unreasonable to believe our people will demand more than their share of the things we have.

YOUR RED & WHITE Grocer is on watch to protect you, his customer.

"BUY WITH CONFIDENCE"

FINE  
FOODS

# RED & WHITE

FINE  
FOODS

# EVERY BANKING SERVICE

Accounts for

## BANKS • FIRMS • INDIVIDUALS

Trusts - Investment Securities - Foreign Exchange - Drafts  
Money Orders - Safety Deposit Vaults - Savings Department

### OFFICERS

James T. Finlen, V. President   James E. Woodward, President   R. W. Place, V. President  
Guy D. Piatt, Ass't Cashier   Ino. J. Burke, Cashier   Wilbur Rowe, Ass't Cashier

# METALS BANK & TRUST COMPANY

Established 1882

BUTTE, MONTANA

Member F.D.I.C.



YOU'LL LIKE . . .

*Highlander*  
PILSENER  
BREW

MISSOULA  
BREWING CO.

Compliments of

# F. W. GRAND SILVER STORES

Butte

TO THE CLASS OF '43

Park at the Park . . .

**PARK HOTEL & BEER PARLOR**

Beer . . . Mixed Drinks

Pete and Jocko

MISSOULA'S  
BIGGEST  
BEER

AT

# D'ORAZI'S

FAMOUS BAR

## Kalispell's Prescription Druggists

ELIZABETH ARDEN TOILETRIES - CANDY

MAGAZINES - CIGARETTES

LUCIEN LELONG PERFUMES

## MacMILLAN DRUG

Noffsinger Block

Kalispell

Compliments of the

## FLATHEAD COMMERCIAL COMPANY

Kalispell

## BISHOP AGENCY

The Office That Pays  
You Dividends

Hammond-Arcade Bldg.

### PATRIOTISM

Starts at Home

### CONSERVE YOUR CAR

By Regular Service

For Complete Service See Your

CHEVROLET DEALER

### FISHER - KRAABEL CO.

301 W. Broadway

Phone 2149

## *Almost a Forest*

... of poles carry the copper sinews that serve Montana's war production industries with vital electric power.

After the war, this electricity will do its real job . . . bringing you easier, better living.

## THE MONTANA POWER COMPANY



# BERTOGLIO STORAGE AND APPLIANCE CO.

TO THE CLASS OF '43

General Offices:

800 Utah Avenue - Butte

CONGRATULATIONS

. . . GRADUATES

May Success Be Yours

•  
WHEN IN DOUBT

TRY

SOMETHING DIFFERENT  
•

國美  
金  
雞  
樓



## THE GOLDEN PHEASANT

Featuring Those Famous Chinese and American Foods

**STRATFORD MEN'S SHOP**  
"You look best when STRATFORD DRESSED"

Agency For:

Fashion Park, G.G.G. and  
Stratford Clothes.  
Dobb's Hats, Arrow and  
Manhattan Shirts.

Butte

180 31 N. Main St.

Best Place in Butte to Eat . . .

**GAMER'S CONFECTIONERY**

•  
SHOES . . . For College Men and Women

HOSIERY AND HANDBAGS

Quality Since '79

Mail Orders Promptly Filled

**GAMER'S SHOE COMPANY**

54 W. Park

Butte, Montana

When You Want the Best, Come to the . . .

# MISSOULA HOTEL

HOME OF THE

CAFE MONTMARTRE AND THE  
JUNGLE CLUB

Missoula's Finest - One of Montana's Best

We Specialize in Parties and Banquets — Large and Small

For the Best Auto Service  
and Repair Work

SEE

**Roosevelt-Osborne  
Motor Co.**

Incorporated

Phone 2008

Missoula

## MODERN BEAUTY SCHOOL

Beauty Service at  
Lower Prices

**VERONICA McCUNE**

Hammond-Arcade Bldg.



# K

# V

# G

# O

1290 Kilocycles

Your Friendly  
Columbia Station

**Missoula, Montana**

# SAFEWAY

Two Most Modern  
Market to Serve  
Missoula

801 S. Higgins  
231 E. Broadway

Parking Lots for  
Your Convenience  
While Shopping

## STORES

**O**  
**C**  
**T**  
**O**  
**N**  
**E**  
**K**

All Types of Sweaters

ATHLETIC  
HONORARY  
AND FRATERNITY

KNITTED GOODS  
OF ALL KINDS

Highest Quality  
Long Wear

**KNITTING COMPANY**



SAE's—Mather and Weber . . .

Dr. L. R. Barnett

Dr. D. R. Barnett

OPTOMETRISTS

Glasses Fitted  
All Optical Repairs

**BARNETT  
OPTICAL**

129 E. Broadway    Missoula, Mont.

WHEN IN TOWN

MEET ME AT

*Murrill's*

**MISSOULA • GREAT FALLS**

119 WEST MAIN

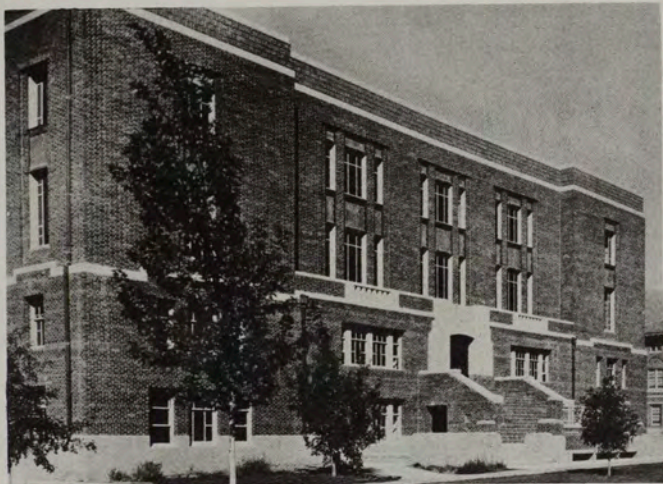
310 CENTRAL AVE.

We Appreciate the Patronage the University Students Have Given Us

*We Serve the Best Drinks in Town...*

“. . . as just another Murrill service”

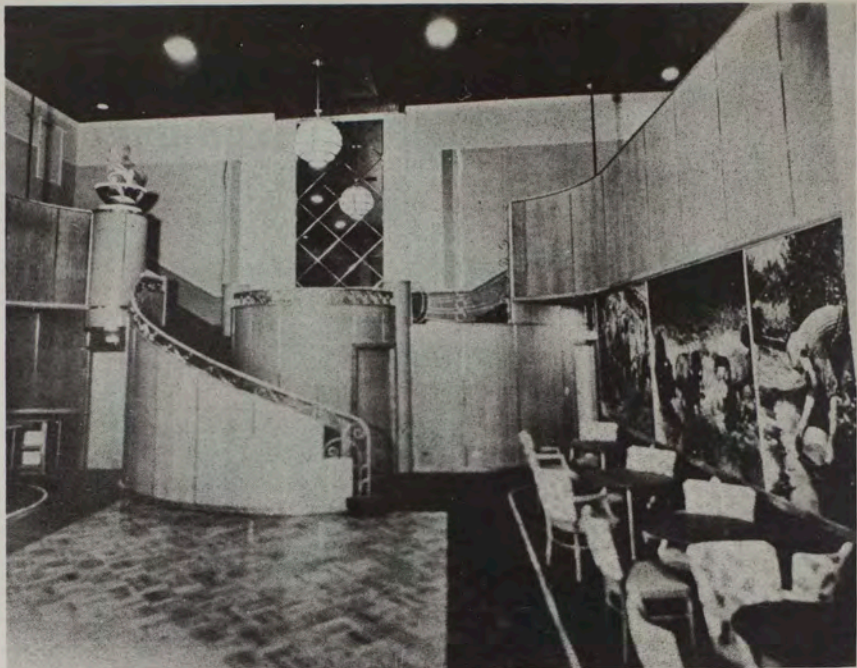




**THE  
MISSOULA MERCANTILE  
COMPANY**

**A GOOD PLACE TO TRADE**

— Since 1865 —



*The Copper Bowl*  
MONTANA'S FAVORITE

Restaurant

Cocktail Lounge

Night Club

AN EXCEPTIONAL ORCHESTRA

SATURDAY AT 9 P. M.

**HOTEL FINLEN**

Missoula's Finest . . .

## GOLD MEDAL DAIRIES

Gold Medal:

Butter  
Cheese  
Ice Cream

Dodge

AGENCY

Plymouth

We Do Car Repair Work

We Have All Makes of Used Cars

## Murphy Motors

208 E. Main

Missoula

DRY CLEANERS

HATS BLOCKED

RUGS CLEANED

## Missoula Laundry Company

Phone 3118

For the Best Food

At the Most Reasonable Price

Try the

## Super Cream Cafe & Ice Cream Co.

531 S. Higgins

322 N. Higgins

Watch  
Repairing  
Jewelry and Flowers  
at

## HEINRICH'S

132 N. Higgins



Back to New Hall . . .

Compliments

of

## KEENE'S SHOE CO.

Butte, Montana

43 E. Park St. Phone 2-4849

# m & m

IN BUTTE

Nationally Known  
for  
Half a Century

Ask For . . .

## BUTTE BEER

BUTTE BREWING COMPANY

Butte, Montana

At Your Store

or

Delivered at Your Door

PASTEURIZED

# MILK & CREAM GARDEN CITY DAIRIES

Phone 4108

123 E. Front

Missoula



PAINTS - VARNISH  
WALLPAPER - GLASS  
MIRRORS

A Complete Line of Grumbacher's  
ARTIST SUPPLIES

**W. P. FULLER & CO.**

120 W. Broadway  
Tel. 6659

IT'S  
BETTER

DRY  
CLEANING



Dial 2151

# FLORENCE LAUNDRY CO.

186

Missoula

# DAILY'S

MEAT . . . A Vital War Food

If Our Quantity Is Limited . . .  
Our Quality Is Still  
Supreme

Get the BEST in MEAT  
at

**JOHN R. DAILY, INC.**

MONTANA PAY ROLL PRODUCTS  
Missoula

# Increased Production for Victory

Every hour of the day the Anaconda Copper Mining Company and its associated companies are stepping up production of copper, zinc, manganese and other metals.

Thousands of Montanans are employed by the Anaconda Copper Mining Company. They are engaged in vital war work in the Butte mines; at the Reduction plants in Anaconda and Great Falls; at the Chrome operations in Eastern Montana, and in the forest and lumber mills of Western Montana.

Victory is the goal of these soldiers of production.

## Anaconda Copper Mining Company

---

### Montana Lumber Is Doing a War Job

Cargoes of war munitions and other supplies destined to the war fronts wear overcoats of Montana lumber.

At munition plants, defense housing projects, at shipyards and factories, products of Montana forests and mills are serving a war purpose,

We on the home front know that Montana lumber is first choice for practical building and repair purposes.

## Anaconda Copper Mining Company

Lumber Department — Bonner, Montana

# MCGILL-WARNER COMPANY

PRINTERS

BINDERS - MAPMAKERS  
LITHOGRAPHERS

Saint Paul

::

Minnesota

## Licensed Ticket Printers

---

IT'S YOUR STORE

FOR WOMEN

Serving you  
is a real pleasure . . .

**Cummins**

Specializing in Clothes for the Coed

218 N. Higgins

Missoula

For All Building Needs . . .

Phone 4455

**Morin  
Lumber  
Company**

Defoe and Shakespear

Missoula

**BUCKBEE  
MEARS**

*School  
Builders*

★  
★  
★ TO HELP CAPTURE  
★ THE SPIRIT OF CAMPUS  
★ AND CLASSROOM..MORE  
★ AND MORE SCHOOLS  
★ AVAIL THEMSELVES OF  
★ THE ADVANTAGES AND  
★ FACILITIES OFFERED BY  
★ BUCKBEE MEARS...  
★ BUDGETS WORKED OUT  
★ FOR COMPLETE PRO-  
★DUCTION... LINDEKE  
★ BUILDING · SAINT PAUL

★  
★ *This book is the result*  
★ *of such cooperation*  
★  
★



# Molloy Made Covers

AGAIN USED ON THE

## Sentinel for 1943

S. B. BABCOCK

Western Representative

1131 Oberlin Drive

GLENDALE :: CALIFORNIA


THE DAVID J. MOLLOY

PLANT

2857 North Western Ave.

CHICAGO :: ILLINOIS





WELLS CAHOON, '42  
WILEY CROSWELL, ex '42  
AL CULLEN, '41  
LEON DAVID, '40  
BILL LASBY, ex '42  
BILL McLURE, '41  
NORMAN NELSON, '40  
STEPHEN STOCKDALE, ex '38  
GLEN VAN BRAMER, ex '40

# The Last Word

... on college annuals, and especially this one. Most yearbooks are photographic masterpieces, cold tributes to the genius of their editors. But this book is not; it wasn't meant to be. It's a panorama of life on the Montana campus during these past months, the last in school for so many. If it preserves on paper the memories of your friends and your university, if it binds us all together with a love for Montana, then it's a success. We didn't have much to work with. A meagre budget, a small staff, a rapidly changing school. There weren't many of us, but to those that were, my sincere thanks. There was Neal Rasmussen who saved a financially dying Sentinel from an early grave, and Helen Walterskirchen—without her beautiful art work this book might not have materialized. And to Photographer Evie Morris, chief reason the freshmen came to work at all, my many thanks, and also to Bob Sias, who though struggling with other activities or a hangover, kept at the job till the bitter end. There are others . . . Gloria Bugli, Bertha McKee, Lorraine Griffith, Ed Voldseth, Karma Johnson, Laula Stranahan. Thanks to Artists Ethel Regan and Virginia Frach, Photographers Lloyd Eastman and Ed Dolan, and also to Ashton, Angstman, Grigsby and Smartt . . . Thanks to all of you for living through my anxious looks and tired temper, for plugging thru endless duties and for, perhaps, seeing your year's work dragged through the mire of student opinion. That's all. The last word. . .

Aline Mosby





